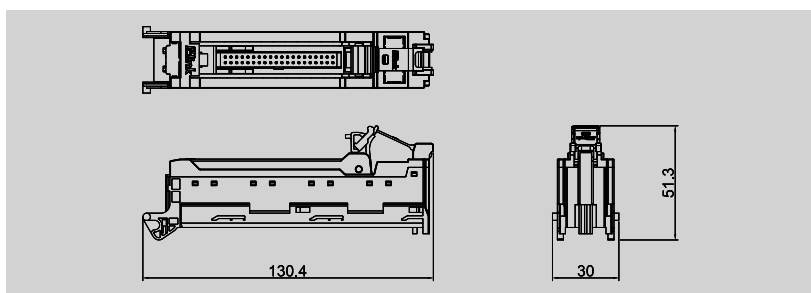
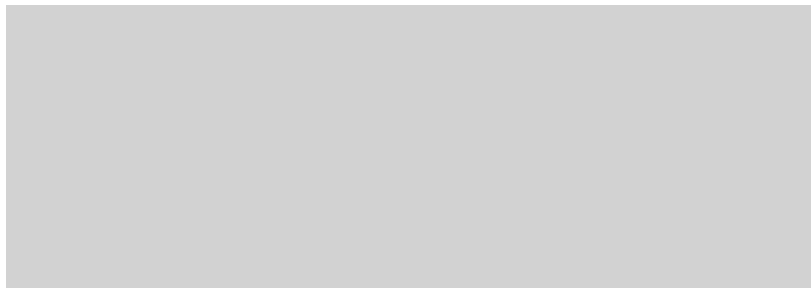
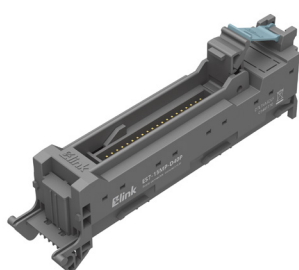


SIEMENS S7-1500 front connector

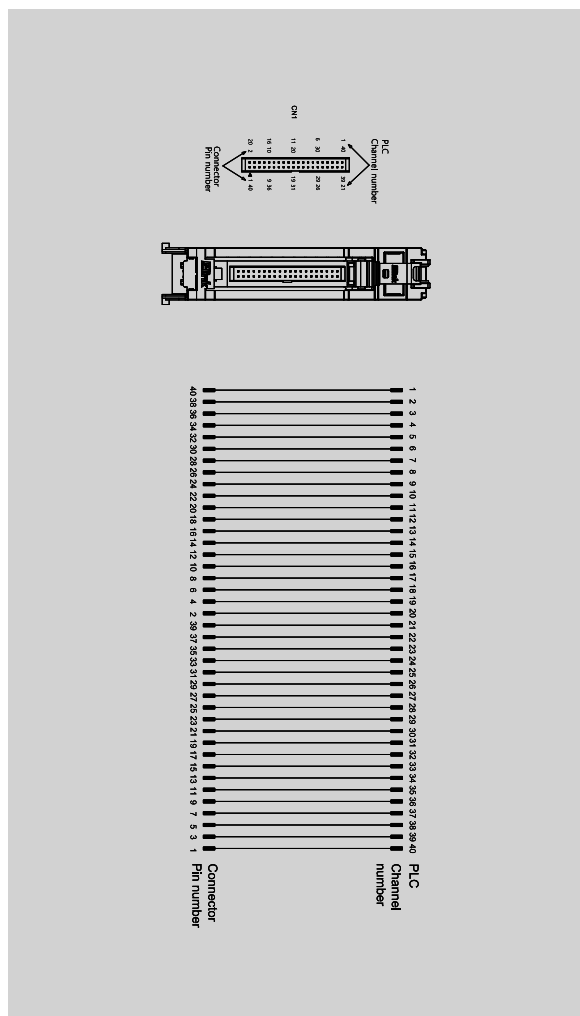
Front adapters for SIMENS S7-1500 cards with 40-pin

Digital 40P

40P series



ES7-15MP-D40P



Technical data

Connection data	
Connection to PLC	HE 10 connectors 40-pin
Connection type	One touch connection
Connection size	0.14 – 0.3mm ² (AWG26 – 22)
Rated data	
Rated voltage	60VDC / 30VAC
MAX. current per channel	1.5A (AWG24)
MAX. current per byte	4A
Total operating current	34A
General data	
Ambient temperature (operational)	-25°C – 50°C
Storage temperature	-40°C – 60°C
Weight	Approx. 52.5g
Insulation coordination	
Rated insulation voltage	<50VAC
Insulation test voltage	0.35kVAC
Dimensions	
Length x width x height (mm)	130.4 x 30 x 51.3
Ordering data	
Order No.	014417010
Accessories / Spare part	