

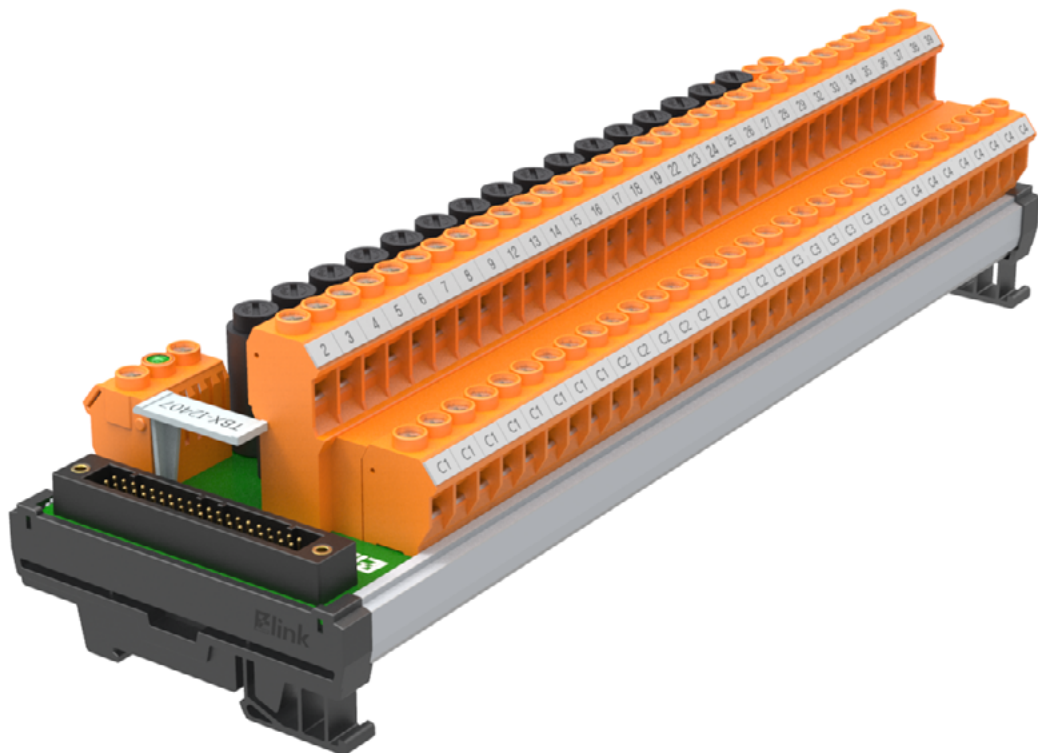
Digital I/O interface units

For SIEMENS S7-300 dedicated boards

ST650 / ST800 시리즈 단자대 모듈은 지멘스 PLC 6ES7-300시리즈 I/O Module에 최적화되어있어서 손쉽게 와이어링 할 수 있으며 최상의 커넥션을 위해 개발된 제품입니다.

D

- Bolt-up (terminal block)
- Compact design
- Power indicator
- DIN (rail mounted type)
- Dual marking



EZlink terminal blocks

ST650 / ST800 series

Product constitution



1. ST800

- Terminal block
 - 650 : 6.5 Pitch
 - 800 : 8.0 Pitch

2. DIO

- Card form
 - DI : Digital input
 - DO : Digital output
 - DIO : Digital in / output
 - FM : Countor

3. 32

- Signal point

4. S

- Applicable PLC
 - S : SIEMENS
 - R : Allen-Bradley

5. C

- Power supply
 - C : Integrated power supply
 - M : Individual power supply

6. 4

- Optional
 - C : The number of COM

7. C

- COM

8. F

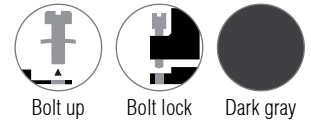
- F : Fuse
- D : Disconnection
- S : Selection

Digital in / output 16 point

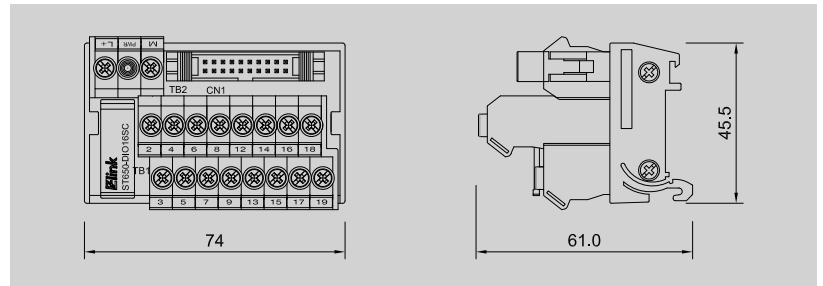
For 16 digital signals

6ES7321-1BH02-0AA0 / 6ES7321-1BH10-0AA0
 6ES7321-7RD00-0AB0 / 6ES7321-1BH50-0AA0
 6ES7322-1BH01-0AA0 / 6ES7322-1BH10-0AA0
 6ES7322-5RD00-0AB0 / 6ES7322-5SD00-0AB0
 6ES7323-1BH01-0AA0

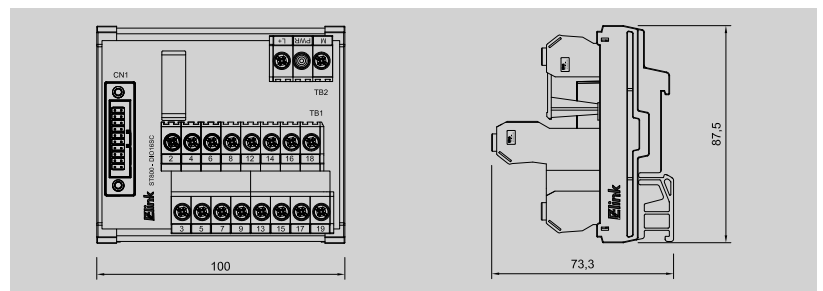
ST650 / ST800 20P series



ST650-DIO16SC 6.50 Pitch



ST800-DIO16SC 8.00 Pitch



Technical data

Connection data	
Connection to PLC	HE 10 connectors 20-pin
Connection type (field)	Screw bolt up
Connection size (field)	0.34 ~ 2.5mm ² (AWG22 ~ 14)

Input-output data	
Operating voltage	24VDC ± 10%
Max. current for channel	1.5A
Number of signals	16
PLC card supply voltage / LED voltage status	24VDC ± 10% / LED green
LED fuse indication per channel	-
PLC card supply current	2A
Fuse per channel	-

General data	
Ambient temperature	-25°C ~ 50°C
Storage temperature	-40°C ~ 60°C
Rated voltage	≤ 50V AC
Insulation test voltage	0.5KV DC
Weight 6.50 / 8.00	Approx. 114.0g / 174.92g

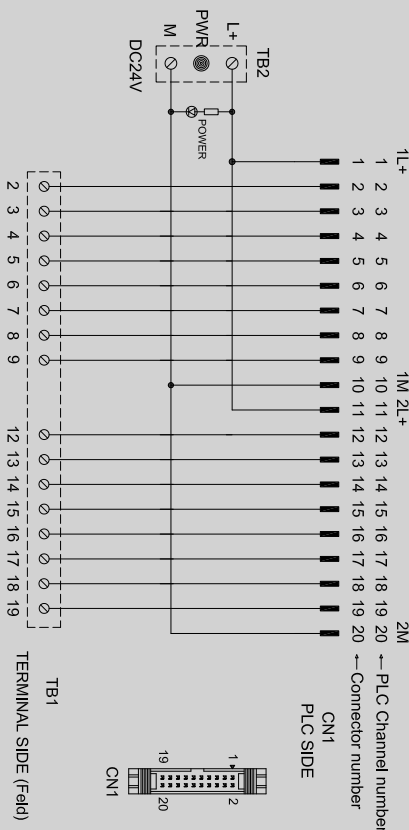
Dimensions	
Length x width x height (mm)	6.50 Pitch 74 x 45.5 x 61 8.00 Pitch 100 x 87.5 x 73.3

Mounting rail	TS35 (Weidmuller)
----------------------	-------------------

Ordering data	
Order No.	
62217001 (6.50 Pitch)	822220002 (8.00 Pitch)

Accessories / Spare part	
Terminal markers	6.50 8.00 DEK 5/8
Cross-connector	6.50 COM-6509 8.00 COM-8009

Use with	
Front connector	Cable
S7-300S-DA20P	DHH20-10K25L Page : 105 DAHHC20-10K24B Page : 104



Digital input 16 point

For 16 digital signals with fuse per channel

6ES7321-1BH02-0AA0 / 6ES7321-1BH10-0AA0

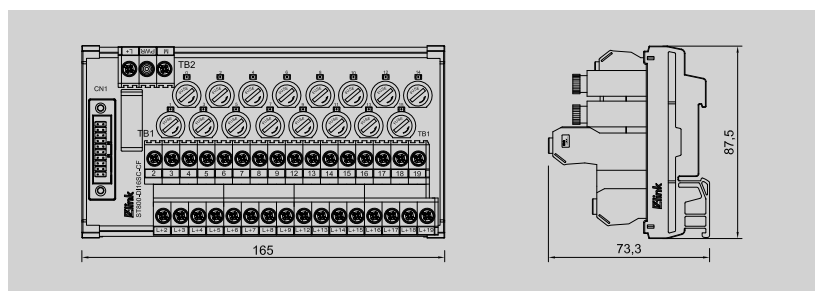
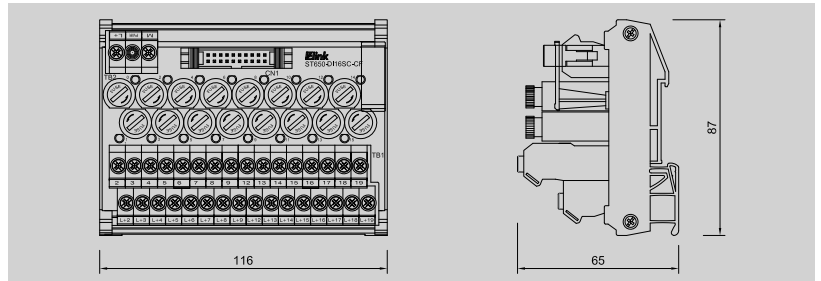
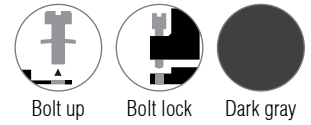
ST650 / ST800 20P series



ST650-DI16SC-CF 6.50 Pitch



ST800-DI16SC-CF 8.00 Pitch



Technical data

Connection data	
Connection to PLC	HE 10 connectors 20-pin
Connection type (field)	Screw bolt up
Connection size (field)	0.34 – 2.5mm ² (AWG22 – 14)

Input-output data	
Operating voltage	24VDC ± 10%
Max. current for channel	1.5A
Number of signs	16
PLC card supply voltage / LED voltage status	24VDC ± 10% / LED green
LED fuse indication per channel	Red
PLC card supply current	2A
Fuse per channel	100 – 500mA

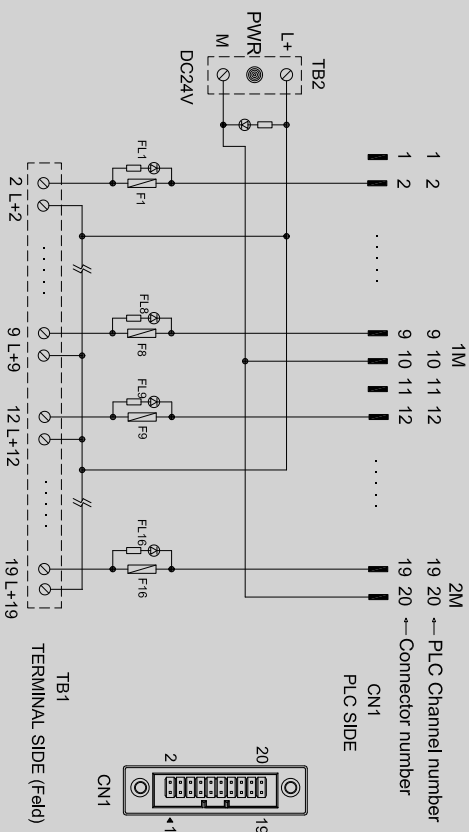
General data	
Ambient temperature	-25°C – 50°C
Storage temperature	-40°C – 60°C
Rated voltage	≤ 50V AC
Insulation test voltage	0.5KV DC
Weight 6.50 / 8.00	Approx. 263.2g / 357.9g

Dimensions	
Length x width x height (mm)	6.50 Pitch 116 x 87 x 65
	8.00 Pitch 165 x 87.5 x 73.3
Mounting rail	TS35 (Weidmuller)

Ordering data	
Order No.	
622217003 (6.50 Pitch)	822220004 (8.00 Pitch)

Accessories / Spare part	
Terminal markers	6.50 8.00 DEK 5/8
Cross-connector	6.50 COM-6509 8.00 COM-8009

Use with	
Front connector	Cable
S7-300S-DA20P	DHH20-10K25L Page : 98
	DAHHC20-10K24B Page : 104

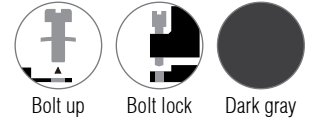


Digital output 16 point

For 16 digital signals with fuse per channel

6ES7322-1BH01-0AA0 / 6ES7322-1BH10-0AA0

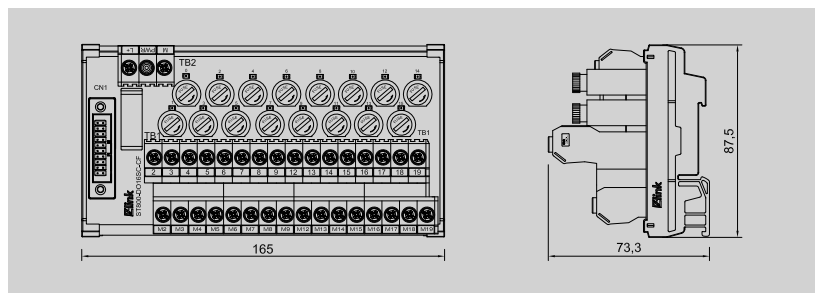
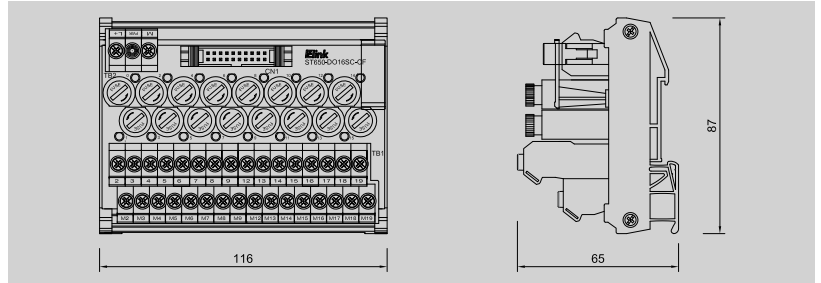
ST650 / ST800 20P series



ST650-DO16SC-CF 6.50 Pitch



ST800-DO16SC-CF 8.00 Pitch



Technical data

Connection data	
Connection to PLC	HE 10 connectors 20-pin
Connection type (field)	Screw bolt up
Connection size (field)	0.34 ~ 2.5mm ² (AWG22 ~ 14)

Input-output data	
Operating voltage	24VDC ± 10%
Max. current for channel	1.5A
Number of signs	16
PLC card supply voltage / LED voltage status	24VDC ± 10% / LED green
LED fuse indication per channel	Red
PLC card supply current	2A
Fuse per channel	100 ~ 500 mA

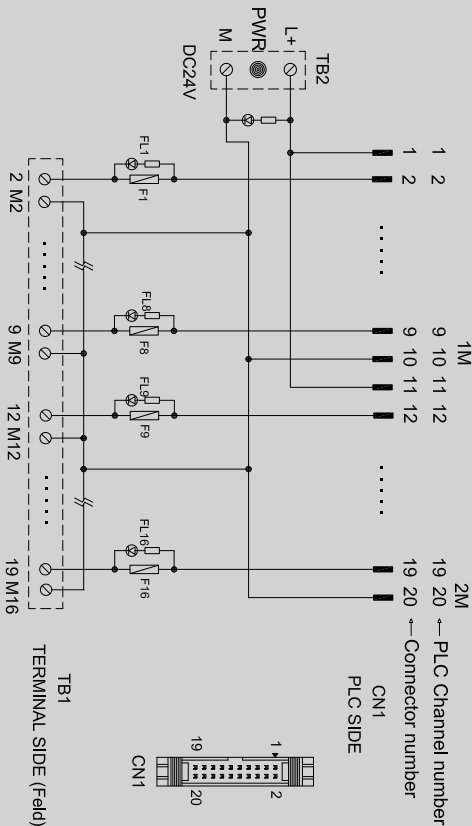
General data	
Ambient temperature	-25°C ~ 50°C
Storage temperature	-40°C ~ 60°C
Rated voltage	≤ 50V AC
Insulation test voltage	0.5KV DC
Weight 6.00 / 8.00	Approx. 263.2g / 357.9g

Dimensions		
Length x width x height (mm)	6.50 Pitch	116 x 87 x 65
	8.00 Pitch	165 x 87.5 x 73.3
Mounting rail	TS35 (Weidmuller)	

Ordering data	
Order No.	
622217005 (6.50 Pitch)	822220006 (8.00 Pitch)

Accessories / Spare part	
Terminal markers	6.50 8.00 DEK 5/8
Cross-connector	6.50 COM-6509 8.00 COM-8009

Use with	
Front connector	Cable
S7-300S-DA20P	DHH20-10K25L Page : 105
	DAHHC20-10K24B Page : 104



Digital input 16 point

For 16 digital signals with fuse or disconnection per channel

6ES7321-1BH02-0AA0 / 6ES7321-1BH10-0AA0

ST800 20P series



Bolt up



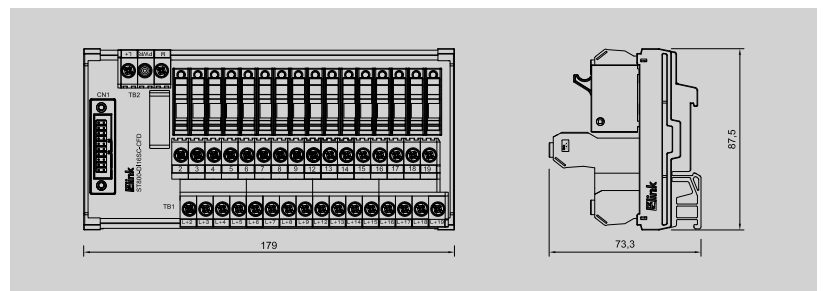
Bolt lock



Dark gray



ST800-DI16SC-CFD 8.00 Pitch



Technical data

Connection data	
Connection to PLC	HE 10 connectors 20-pin
Connection type (field)	Screw bolt up
Connection size (field)	0.34 – 2.5mm ² (AWG22 – 14)

Input-output data	
Operating voltage	24VDC ± 10%
Max. current for channel	1.5A
Number of signals	16
PLC card supply voltage / LED voltage status	24VDC ± 10% / LED green
LED fuse indication per channel	Red
PLC card supply current	2A
Fuse per channel	100 – 500mA

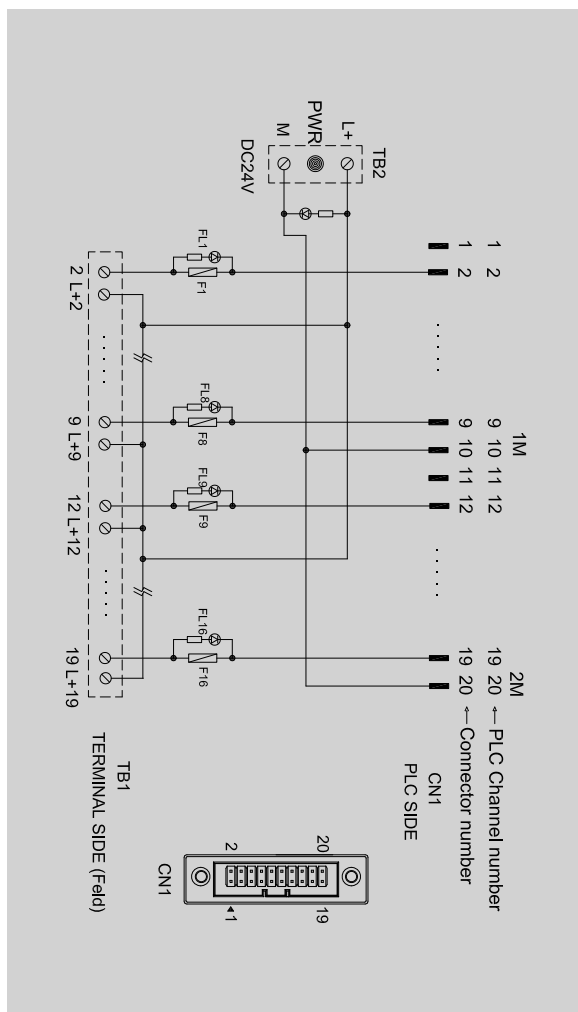
General data	
Ambient temperature	-25°C – 50°C
Storage temperature	-40°C – 60°C
Rated voltage	≤ 50V AC
Insulation test voltage	0.5KV DC
Weight 6.50 / 8.00	Approx. ---g / 421.4g

Dimensions	
Length x width x height (mm)	6.50 Pitch -
	8.00 Pitch 179 x 87.5 x 73.3
Mounting rail	TS35 (Weidmuller)

Ordering data	
Order No.	
--- (6.50 Pitch)	822220007 (8.00 Pitch)

Accessories / Spare part	
Terminal markers	6.50 8.00 DEK 5/8
Cross-connector	6.50 8.00 COM-8009

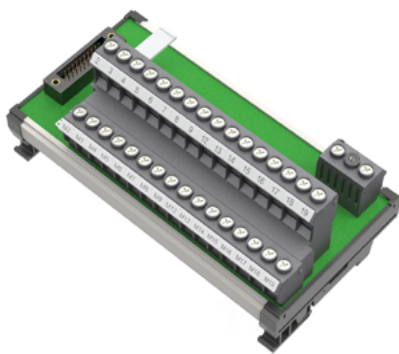
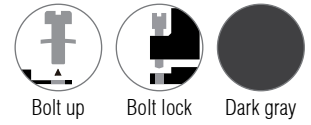
Use with	
Front connector	Cable
S7-300S-DA20P	DAHHC20-10K24B



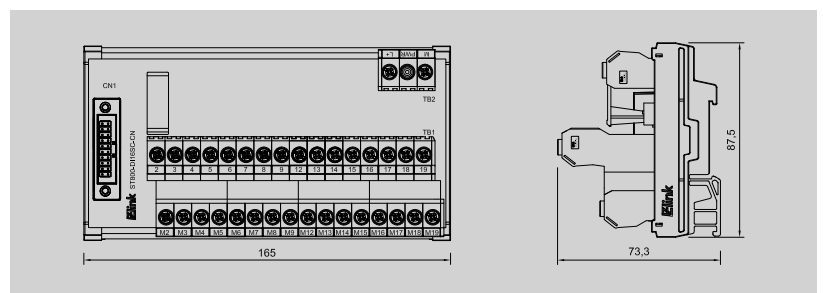
Digital input 16 point
For 16 digital signals NPN

6ES7321-1BH50-0AA0

ST800 20P series



ST800-DI16SC-CN 8.00Pitch



Technical data

Connection data	
Connection to PLC	HE 10 connectors 20-pin
Connection type (field)	Screw bolt up
Connection size (field)	0.34 ~ 2.5mm ² (AWG22 ~ 14)

Input-output data	
Operating voltage	24VDC ± 10%
Max. current for channel	1.5A
Number of signals	16
PLC card supply voltage / LED voltage status	24VDC ± 10% / LED green
LED fuse indication per channel	-
PLC card supply current	2A
Fuse per channel	-

General data	
Ambient temperature	-25°C ~ 50°C
Storage temperature	-40°C ~ 60°C
Rated voltage	≤ 50V AC
Insulation test voltage	0.5KV DC
Weight 6.50 / 8.00	Approx. ---g / 308.6g

Dimensions	
Length x width x height (mm)	6.50 Pitch -
	8.00 Pitch 165 x 87.5 x 73.3

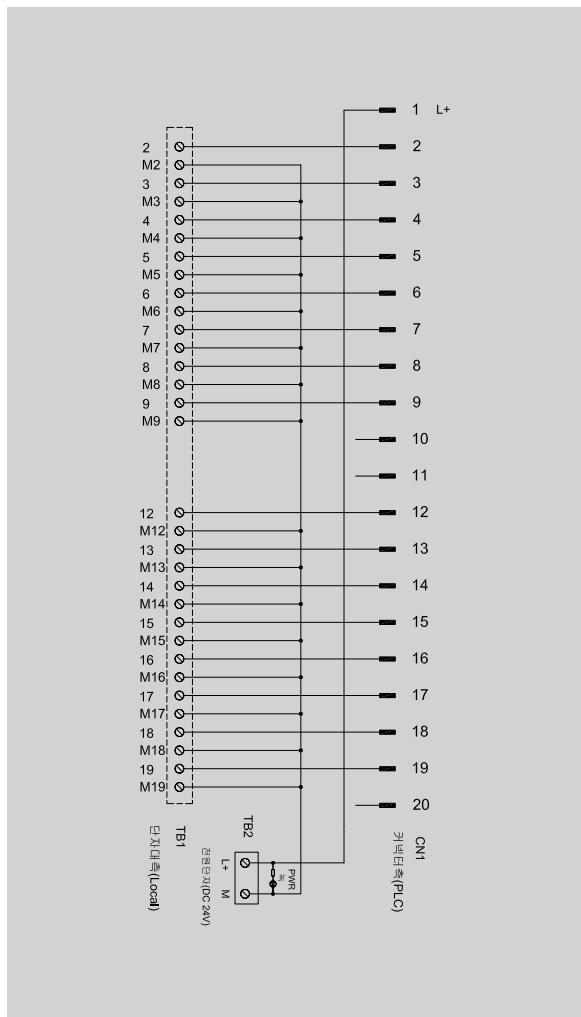
Mounting rail	TS35 (Weidmuller)
----------------------	-------------------

Ordering data

Order No.	
--- (6.50 Pitch)	822220008 (8.00 Pitch)

Accessories / Spare part	
Terminal markers	6.50 8.00 DEK 5/8
Cross-connector	6.50 8.00 COM-8009

Use with	
Front connector	Cable
S7-300S-DA20P	DAHHC20-10K24B

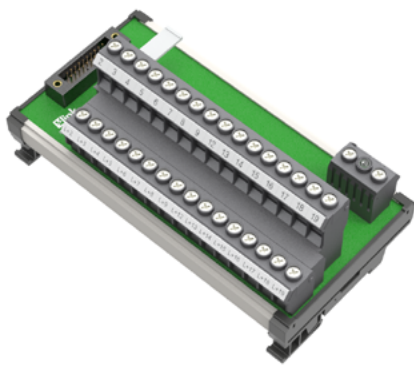
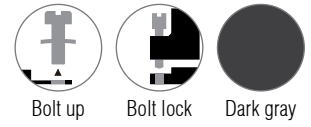


Digital input 16 point

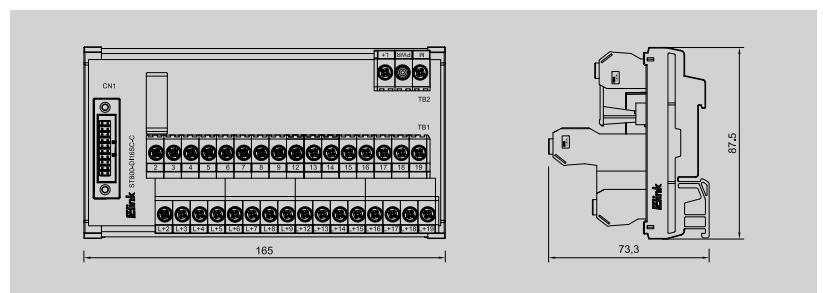
For 16 digital signals

6ES7321-1BH02-0AA0 / 6ES7321-1BH10-0AA0

ST800 20P series



ST800-DI16SC-C 8.00Pitch



Technical data

Connection data	
Connection to PLC	HE 10 connectors 20-pin
Connection type (field)	Screw bolt up
Connection size (field)	0.34 ~ 2.5mm ² (AWG22 ~ 14)

Input-output data	
Operating voltage	24VDC ± 10%
Max. current for channel	1.5A
Number of signals	16
PLC card supply voltage / LED voltage status	24VDC ± 10% / LED green
LED fuse indication per channel	-
PLC card supply current	2A
Fuse per channel	-

General data	
Ambient temperature	-25°C ~ 50°C
Storage temperature	-40°C ~ 60°C
Rated voltage	≤ 50V AC
Insulation test voltage	0.5KV DC
Weight 6.50 / 8.00	Approx. ---g / 308.6g

Dimensions	
Length x width x height (mm)	6.50 Pitch -
	8.00 Pitch 165 x 87.5 x 73.3

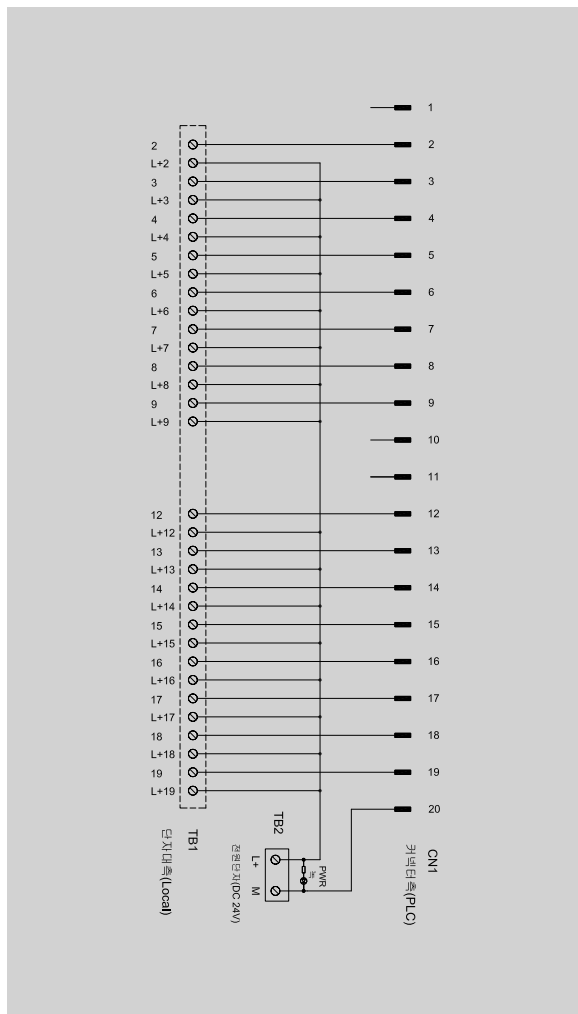
Mounting rail	TS35 (Weidmuller)
---------------	-------------------

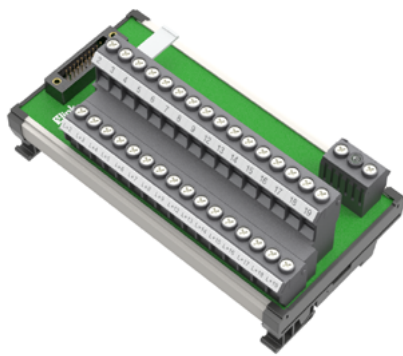
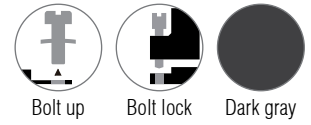
Ordering data

Order No.	
--- (6.50 Pitch)	822220009 (8.00 Pitch)

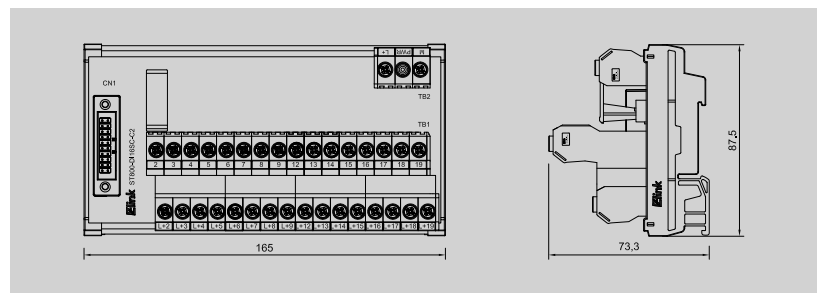
Accessories / Spare part	
Terminal markers	6.50 8.00 DEK 5/8
Cross-connector	6.50 8.00 COM-8009

Use with	
Front connector	Cable
S7-300S-DA20P	DAHHC20-10K24B





ST800-DI16SC-C2 8.00Pitch



Technical data

Connection data	
Connection to PLC	HE 10 connectors 20-pin
Connection type (field)	Screw bolt up
Connection size (field)	0.34 ~ 2.5mm ² (AWG22 ~ 14)

Input-output data	
Operating voltage	24VDC ± 10%
Max. current for channel	1.5A
Number of signals	16
PLC card supply voltage / LED voltage status	24VDC ± 10% / LED green
LED fuse indication per channel	-
PLC card supply current	2A
Fuse per channel	-

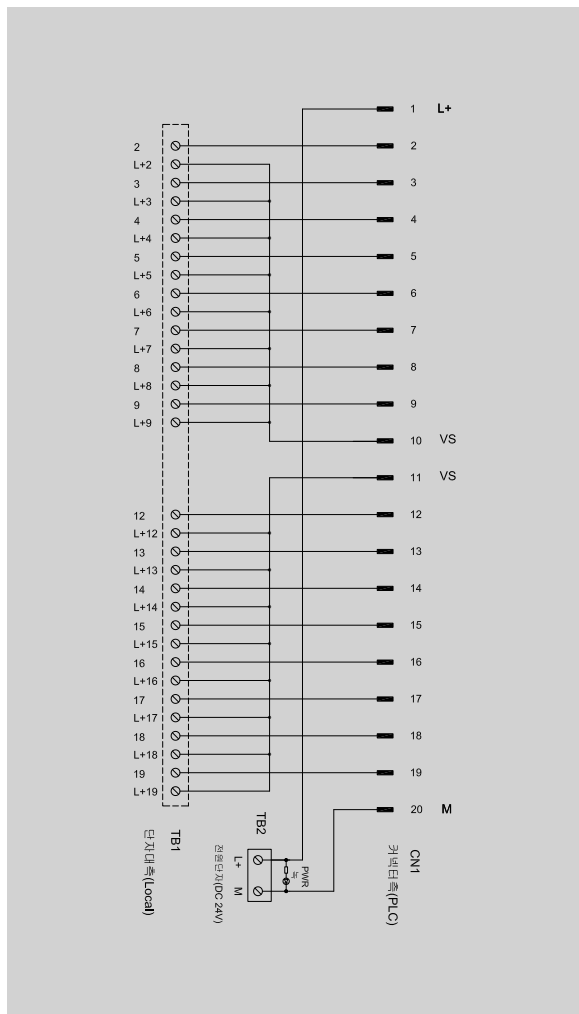
General data	
Ambient temperature	-25°C ~ 50°C
Storage temperature	-40°C ~ 60°C
Rated voltage	≤ 50V AC
Insulation test voltage	0.5KV DC
Weight 6.50 / 8.00	Approx. ---g / 308.6g

Dimensions	
Length x width x height (mm)	6.50 Pitch -
	8.00 Pitch 165 x 87.5 x 73.3
Mounting rail	TS35 (Weidmuller)

Ordering data	
Order No.	
--- (6.50 Pitch)	822220010 (8.00 Pitch)

Accessories / Spare part	
Terminal markers	6.50 8.00 DEK 5/8
Cross-connector	6.50 8.00 COM-8009

Use with	
Front connector	Cable
S7-300S-DA20P	DAHHC20-10K24B



Digital input 32 point

For 32 digital signals

6ES7321-1BL00-0AA0 / 6ES7321-1CH00-0AA0

ST800 40P series



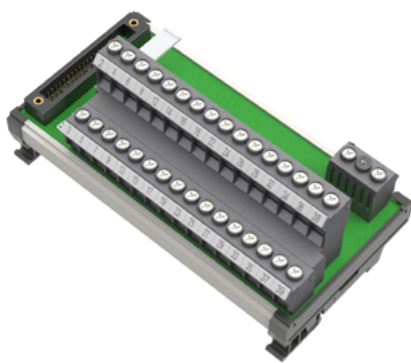
Bolt up



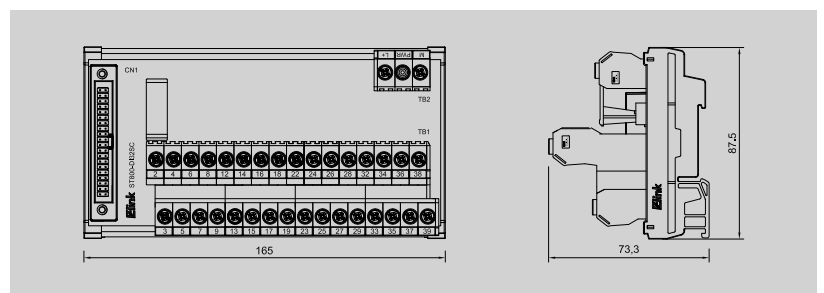
Bolt lock



Dark gray



ST800-DI32SC 8.00 Pitch



Technical data

Connection data	
Connection to PLC	HE 10 connectors 40-pin
Connection type (field)	Screw bolt up
Connection size (field)	0.34 ~ 2.5mm ² (AWG22 ~ 14)

Input-output data	
Operating voltage	24VDC ± 10%
Max. current for channel	1.5A
Number of signals	32
PLC card supply voltage / LED voltage status	24VDC ± 10% / LED green
LED fuse indication per channel	-
PLC card supply current	2A
Fuse per channel	-

General data	
Ambient temperature	-25°C ~ 50°C
Storage temperature	-40°C ~ 60°C
Rated voltage	≤ 50V AC
Insulation test voltage	0.5KV DC
Weight 6.50 / 8.00	Approx. ---g / 311.0g

Dimensions	
Length x width x height (mm)	6.50 Pitch -
	8.00 Pitch 165 x 87.5 x 73.3

Mounting rail	TS35 (Weidmuller)
----------------------	-------------------

Ordering data

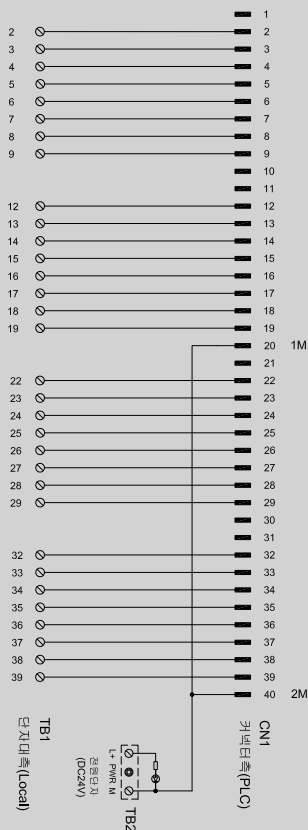
Order No.	
--- (6.50 Pitch)	824220011 (8.00 Pitch)

Accessories / Spare part

Terminal markers	6.50	8.00 DEK 5/8
Cross-connector	6.50	8.00 COM-8009

Use with

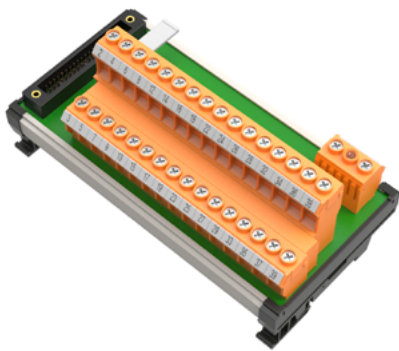
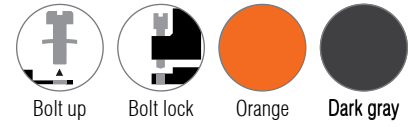
Front connector		Cable	
S7-300S-DA40P	Page : 99	DAHHC40-10K24B	Page : 106



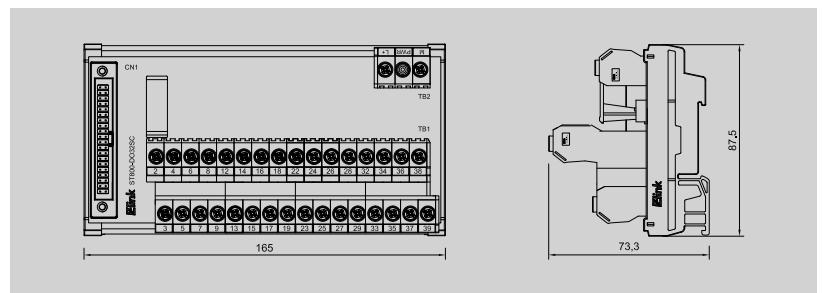
Digital output 32 point
For 32 digital signals

6ES7322-1BL00-0AA0 / 6ES7322-5GH00-0AB0
6ES7322-8BH10-0AB0

ST800 40P series



ST800-D032SC 8.00 Pitch



Technical data

Connection data	
Connection to PLC	HE 10 connectors 40-pin
Connection type (field)	Screw bolt up
Connection size (field)	0.34 ~ 2.5mm ² (AWG22 ~ 14)

Input-output data	
Operating voltage	24VDC ± 10%
Max. current for channel	1.5A
Number of signals	32
PLC card supply voltage / LED voltage status	24VDC ± 10% / LED green
LED fuse indication per channel	-
PLC card supply current	2A
Fuse per channel	-

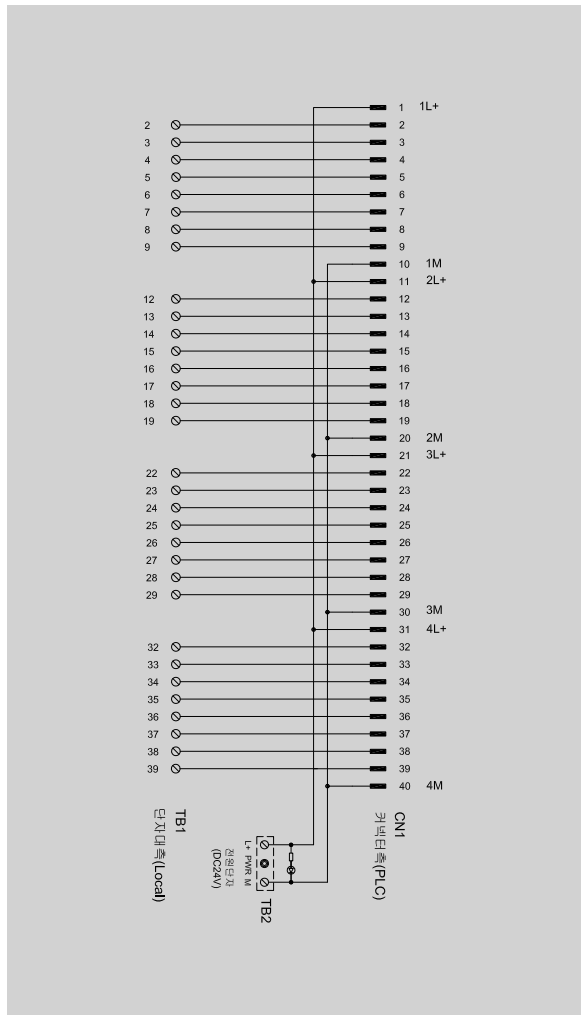
General data	
Ambient temperature	-25°C ~ 50°C
Storage temperature	-40°C ~ 60°C
Rated voltage	≤ 50V AC
Insulation test voltage	0.5KV DC
Weight 6.50 / 8.00	Approx. ---g / 311.0g

Dimensions	
Length x width x height (mm)	6.50 Pitch -
	8.00 Pitch 165 x 87.5 x 73.3
Mounting rail	TS35 (Weidmuller)

Ordering data	
Order No.	
--- (6.50 Pitch)	824220012 (8.00 Pitch)

Accessories / Spare part	
Terminal markers	6.50 8.00 DEK 5/8
Cross-connector	6.50 8.00 COM-8009

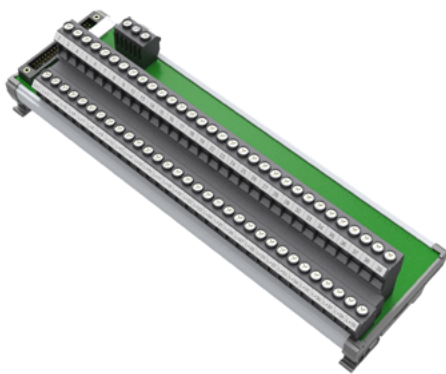
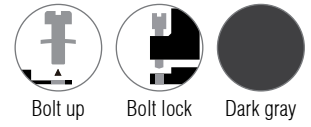
Use with	
Front connector	Cable
S7-300S-DA40P	DAHHC40-10K24B



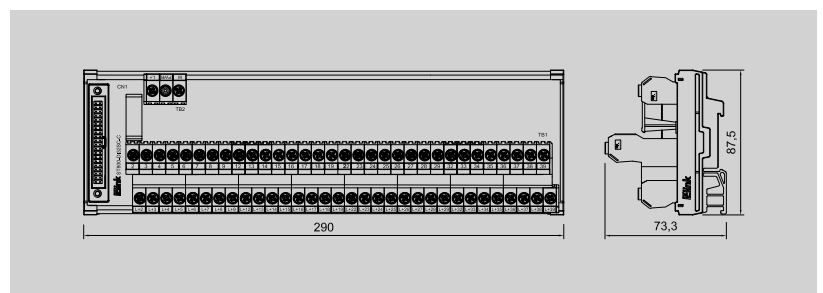
Digital input 32 point
For 32 digital signals

6ES7321-1BL00-0AA0

ST800 40P series



ST800-DI32SC-C 8.00 Pitch



Technical data

Connection data	
Connection to PLC	HE 10 connectors 40-pin
Connection type (field)	Screw bolt up
Connection size (field)	0.34 ~ 2.5mm ² (AWG22 ~ 14)

Input-output data	
Operating voltage	24VDC ± 10%
Max. current for channel	1.5A
Number of signals	32
PLC card supply voltage / LED voltage status	24VDC ± 10% / LED green
LED fuse indication per channel	-
PLC card supply current	2A
Fuse per channel	-

General data	
Ambient temperature	-25°C ~ 50°C
Storage temperature	-40°C ~ 60°C
Rated voltage	≤ 50V AC
Insulation test voltage	0.5KV DC
Weight 6.50 / 8.00	Approx. g / 575.3g

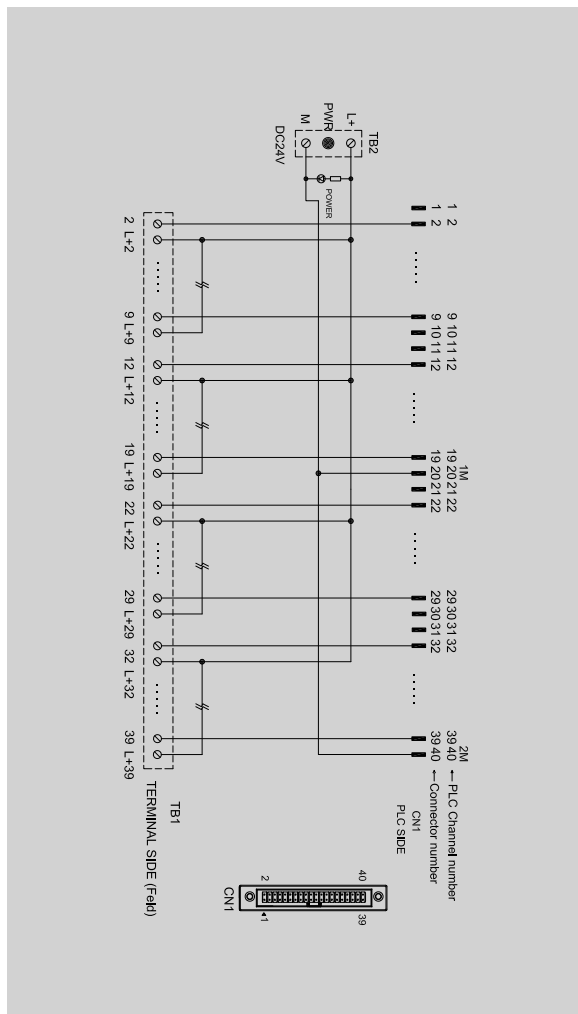
Dimensions	
Length x width x height (mm)	6.50 Pitch -
	8.00 Pitch 290 x 87.5 x 73.3

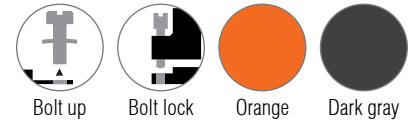
Mounting rail	TS35 (Weidmuller)
----------------------	-------------------

Ordering data	
Order No.	
--- (6.50 Pitch)	824220013 (8.00 Pitch)

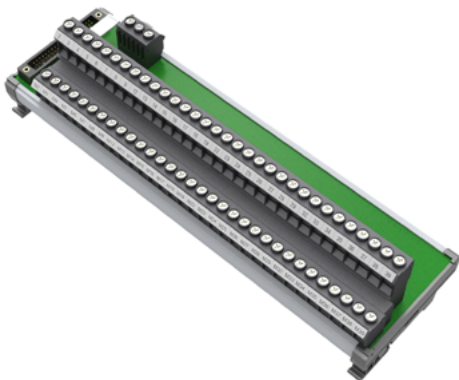
Accessories / Spare part	
Terminal markers	6.50 8.00 DEK 5/8
Cross-connector	6.50 8.00 COM-8009

Use with	
Front connector	Cable
S7-300S-DA40P	DAHHC40-10K24B

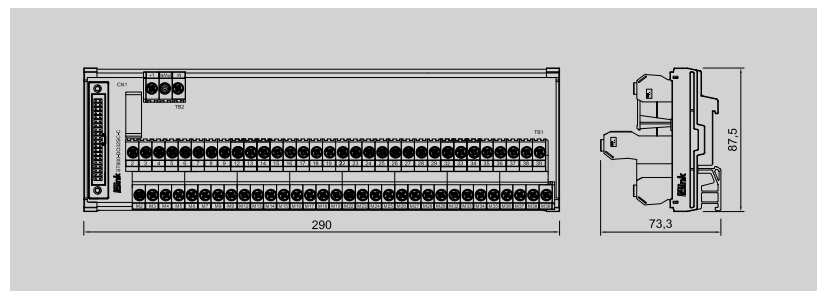




D



ST800-D032SC-C 8.00 Pitch



Technical data

Connection data	
Connection to PLC	HE 10 connectors 40-pin
Connection type (field)	Screw bolt up
Connection size (field)	0.34 ~ 2.5mm ² (AWG22 ~ 14)

Input-output data	
Operating voltage	24VDC ± 10%
Max. current for channel	1.5A
Number of signals	32
PLC card supply voltage / LED voltage status	24VDC ± 10% / LED green
LED fuse indication per channel	-
PLC card supply current	2A
Fuse per channel	-

General data	
Ambient temperature	-25°C ~ 50°C
Storage temperature	-40°C ~ 60°C
Rated voltage	≤ 50V AC
Insulation test voltage	0.5KV DC
Weight 6.50 / 8.00	Approx. ---g / 575.3g

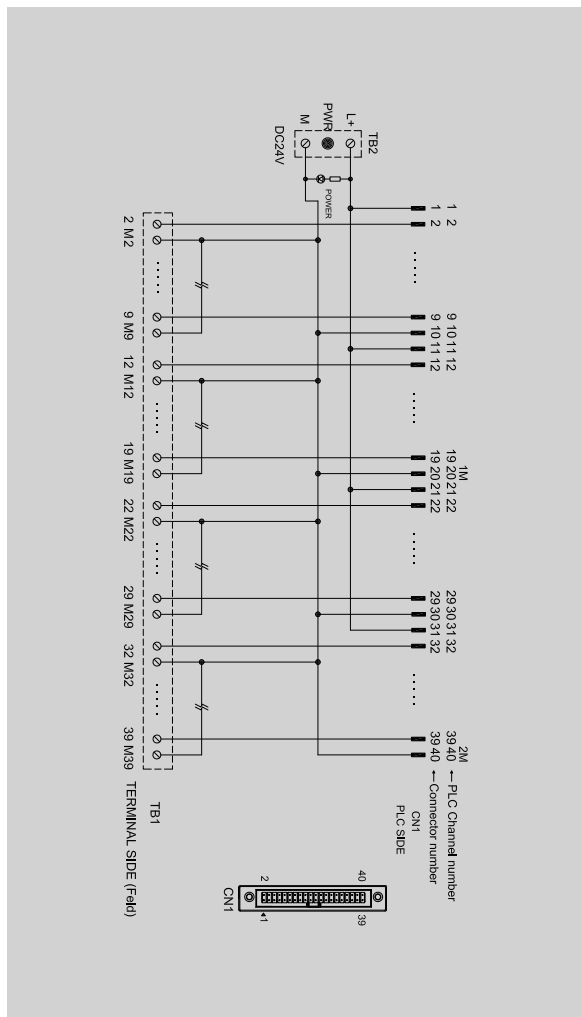
Dimensions	
Length x width x height (mm)	6.50 Pitch - 8.00 Pitch 290 x 87.5 x 73.3

Mounting rail	TS35 (Weidmuller)
----------------------	-------------------

Ordering data	
Order No.	---
--- (6.50 Pitch)	824220014 (8.00 Pitch)

Accessories / Spare part	
Terminal markers	6.50 8.00 DEK 5/8
Cross-connector	6.50 8.00 COM-8009

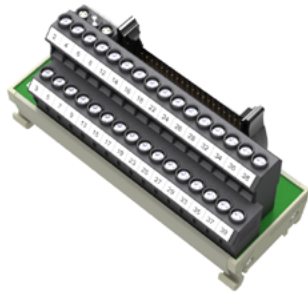
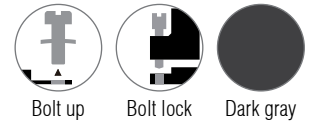
Use with	
Front connector	Cable
S7-300S-DA40P	DAHHC40-10K24B



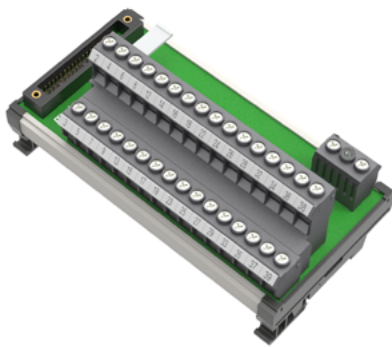
Digital in / output 32 point
For 32 digital signals

6ES7321-1BL00-0AA0 / 6ES7321-1CH00-0AA0
6ES7322-1BL00-0AA0 / 6ES7322-5GH00-0AB0
6ES7322-8BH10-0AB0

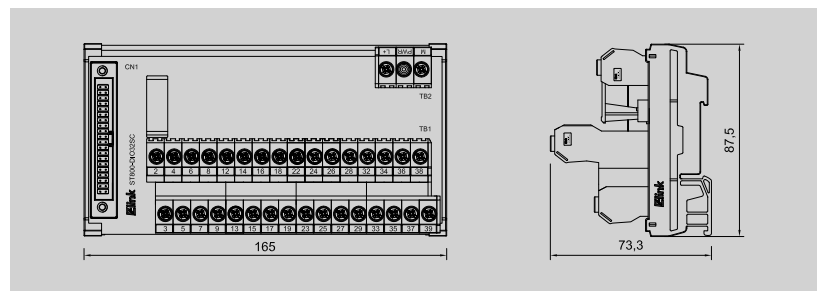
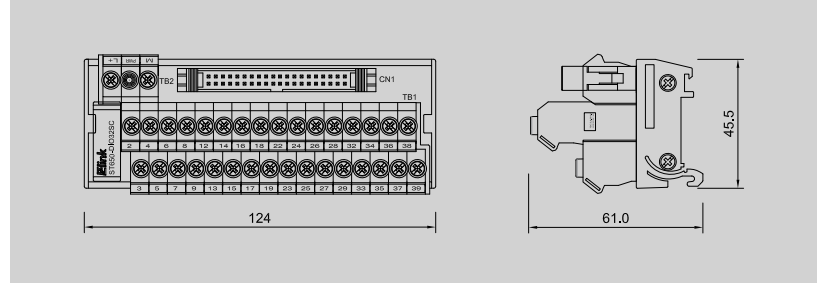
ST650 / ST800 40P series



ST650-DIO32SC 6.50 Pitch



ST800-DIO32SC 8.00 Pitch



Technical data

Connection data	
Connection to PLC	HE 10 connectors 40-pin
Connection type (field)	Screw bolt up
Connection size (field)	0.34 ~ 2.5mm ² (AWG22 ~ 14)

Input-output data	
Operating voltage	24VDC ± 10%
Max. current for channel	1.5A
Number of signs	32
PLC card supply voltage / LED voltage status	24VDC ± 10% / LED green
LED fuse indication per channel	-
PLC card supply current	2A
Fuse per channel	-

General data	
Ambient temperature	-25°C ~ 50°C
Storage temperature	-40°C ~ 60°C
Rated voltage	≤ 50V AC
Insulation test voltage	0.5KV DC
Weight 6.50 / 8.00	Approx. 179.7g / 308.6g

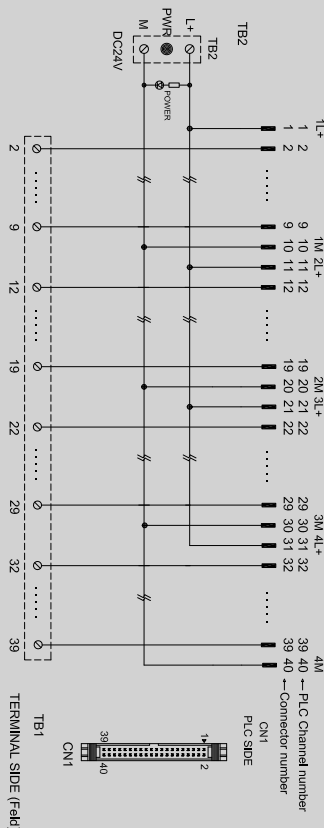
Dimensions	
Length x width x height (mm)	6.50 Pitch 124 x 45.5 x 61
	8.00 Pitch 165 x 87.5 x 73.3

Mounting rail	TS35 (Weidmuller)
----------------------	-------------------

Ordering data	
Order No.	
624217015 (6.50 Pitch)	824220016 (8.00 Pitch)

Accessories / Spare part	
Terminal markers	6.50 8.00 DEK 5/8
Cross-connector	6.50 COM-6509 8.00 COM-8009

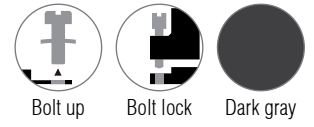
Use with	
Front connector	Cable
S7-300S-DA40P	DHH40-10K25L Page : 107
	DAHHC40-10K24B Page : 106



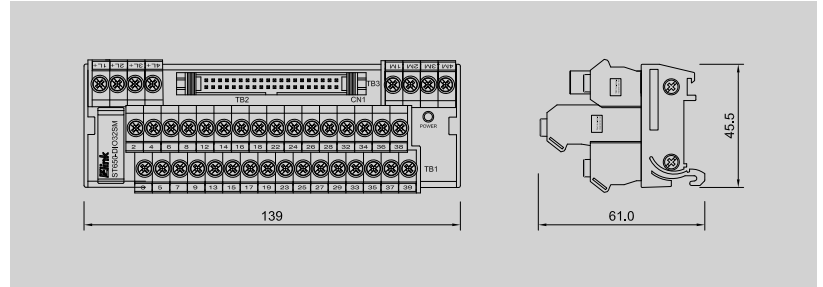
Digital in / output 32 point
For 32 digital signals

6ES7321-1BL00-0AA0 / 6ES7321-1CH00-0AA0
6ES7322-1BL00-0AA0 / 6ES7322-5GH00-0AB0
6ES7322-8BH10-0AB0 / 6ES7323-1BL00-0AA0

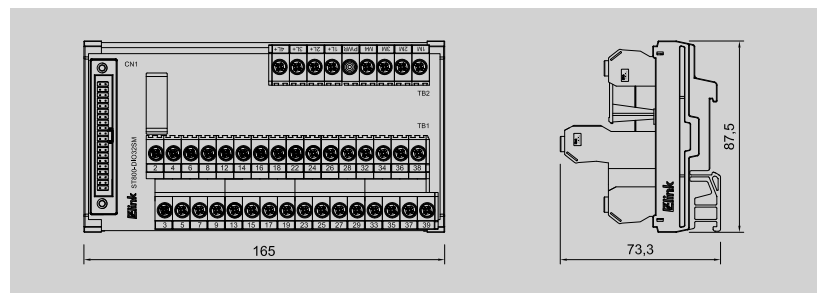
ST650 / ST800 40P series



ST650-DIO32SM 6.50 Pitch



ST800-DIO32SM 8.00 Pitch



Technical data

Connection data	
Connection to PLC	HE 10 connectors 40-pin
Connection type (field)	Screw bolt up
Connection size (field)	0.34 ~ 2.5mm ² (AWG22 ~ 14)

Input-output data	
Operating voltage	24VDC ± 10%
Max. current for channel	1.5A
Number of signals	32
PLC card supply voltage / LED voltage status	24VDC ± 10% / LED green
LED fuse indication per channel	-
PLC card supply current	2A
Fuse per channel	-

General data	
Ambient temperature	-25°C ~ 50°C
Storage temperature	-40°C ~ 60°C
Rated voltage	≤ 50V AC
Insulation test voltage	0.5KV DC
Weight 6.50 / 8.00	Approx. 205.1g / 350.7g

Dimensions	
Length x width x height (mm)	6.50 Pitch 139 x 45.5 x 61
	8.00 Pitch 165 x 87.5 x 73.3

Mounting rail	TS35 (Weidmuller)
----------------------	-------------------

Ordering data

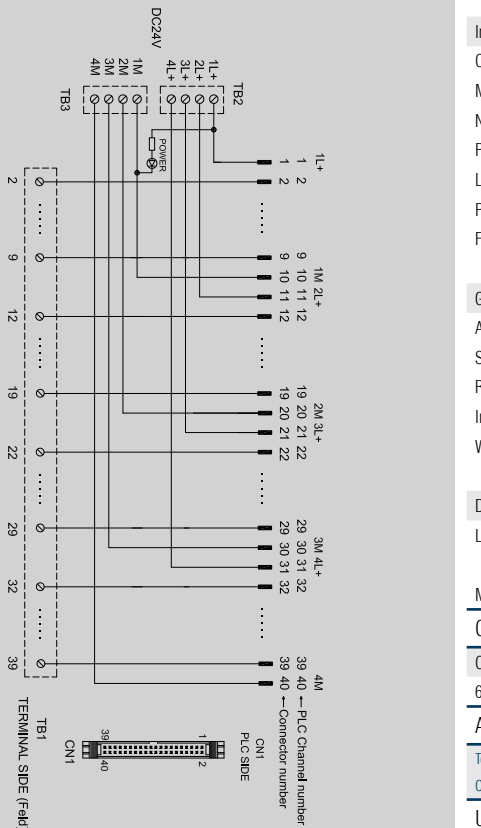
Order No.	
624217017 (6.50 Pitch)	824220018 (8.00 Pitch)

Accessories / Spare part

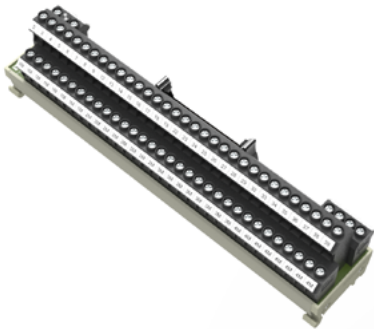
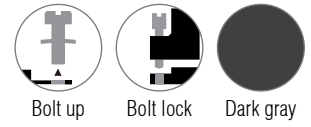
Terminal markers	6.50 8.00 DEK 5/8
Cross-connector	6.50 COM-6509 8.00 COM-8009

Use with

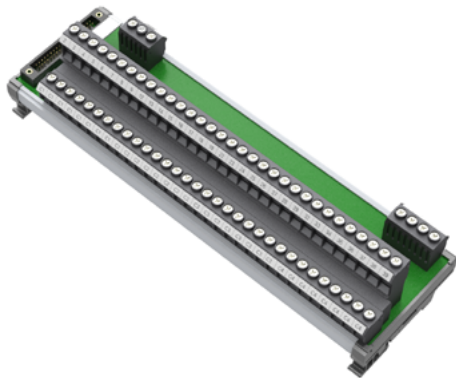
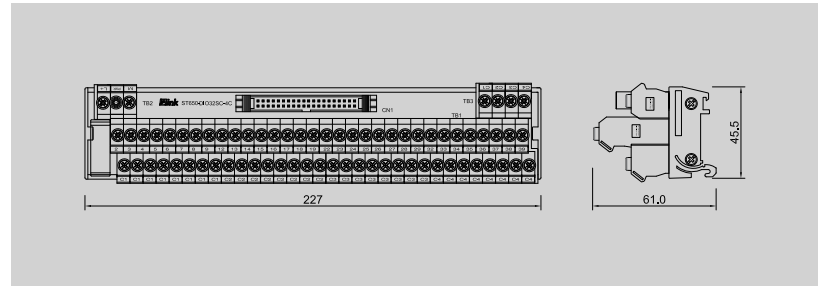
Front connector	Cable
S7-300S-DA40P	DHH40-10K25L Page : 107
	DAHHC40-10K24B Page : 106



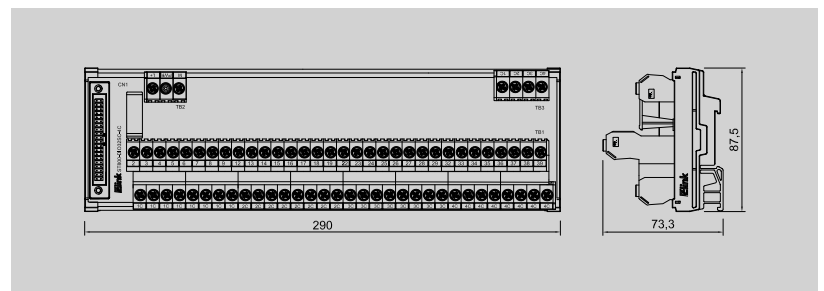
ST650 / ST800 40P series



ST650-DIO32SC-4C 6.50 Pitch



ST800-DIO32SC-4C 8.00 Pitch



Technical data

Connection data	
Connection to PLC	HE 10 connectors 40-pin
Connection type (field)	Screw bolt up
Connection size (field)	0.34 ~ 2.5mm ² (AWG22 ~ 14)

Input-output data	
Operating voltage	24VDC ± 10%
Max. current for channel	1.5A
Number of signals	32
PLC card supply voltage / LED voltage status	24VDC ± 10% / LED green
LED fuse indication per channel	-
PLC card supply current	2A
Fuse per channel	-

General data	
Ambient temperature	-25°C ~ 50°C
Storage temperature	-40°C ~ 60°C
Rated voltage	≤ 50V AC
Insulation test voltage	0.5KV DC
Weight 6.50 / 8.00	Approx. 412.6g / 699.4g

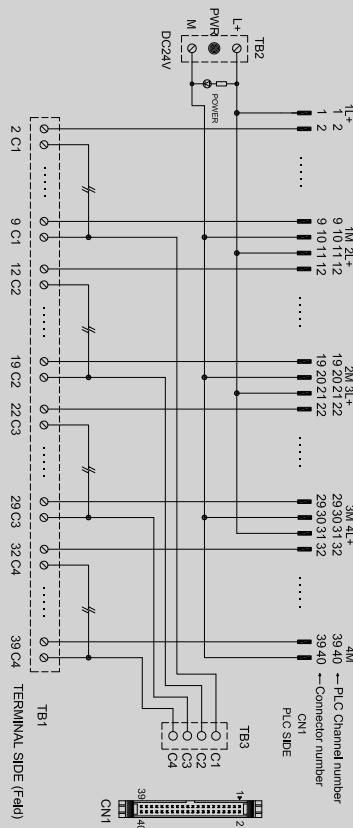
Dimensions	
Length x width x height (mm)	6.50 Pitch 227 x 45.5 x 61 8.00 Pitch 290 x 87.5 x 73.3

Mounting rail	TS35 (Weidmuller)
----------------------	-------------------

Ordering data	
Order No.	
624217019 (6.50 Pitch)	824220020 (8.00 Pitch)

Accessories / Spare part	
Terminal markers	6.50 8.00 DEK 5/8
Cross-connector	6.50 COM-6509 8.00 COM-8009

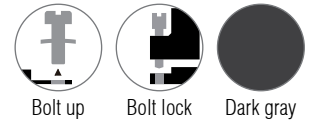
Use with	
Feront connector	Cable
S7-300S-DA40P	DHH40-10K25L Page : 107 DAHHC40-10K24B Page : 106



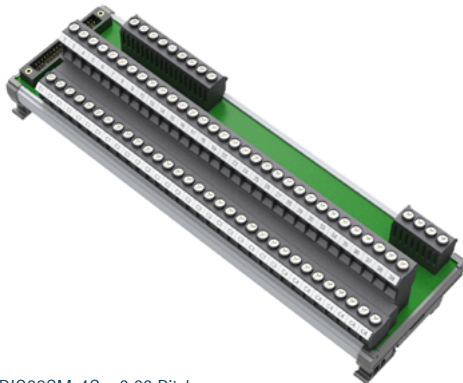
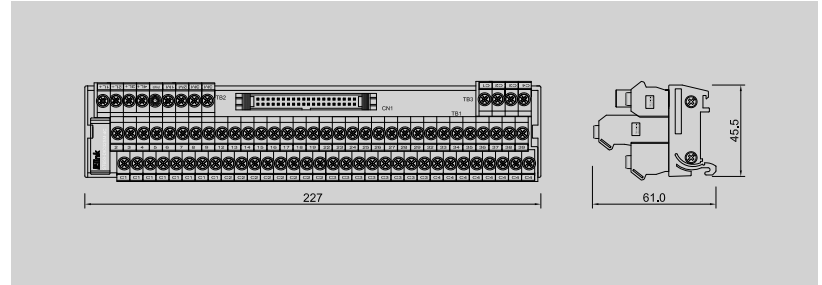
Digital in / output 32 point
For 32 digital signals

6ES7321-1BL00-0AA0 / 6ES7322-1BL00-0AA0
6ES7322-8BH10-0AB0 / 6ES7323-1BL00-0AA0

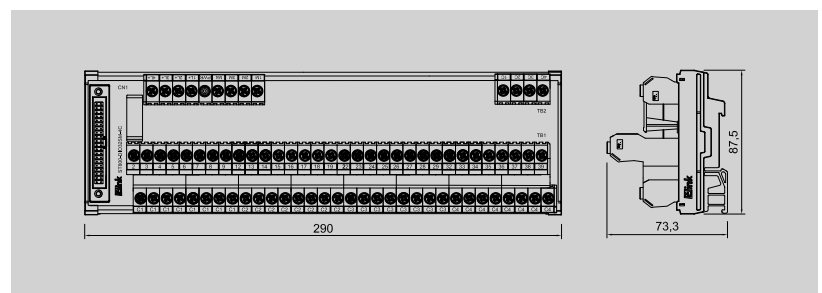
ST650 / ST800 40P series



ST650-DIO32SM-4C 6.50 Pitch



ST800-DIO32SM-4C 8.00 Pitch



Technical data

Connection data	
Connection to PLC	HE 10 connectors 40-pin
Connection type (field)	Screw bolt up
Connection size (field)	0.34 ~ 2.5mm ² (AWG22 ~ 14)

Input-output data	
Operating voltage	24VDC ± 10%
Max. current for channel	1.5A
Number of signals	32
PLC card supply voltage / LED voltage status	24VDC ± 10% / LED green
LED fuse indication per channel	-
PLC card supply current	2A
Fuse per channel	-

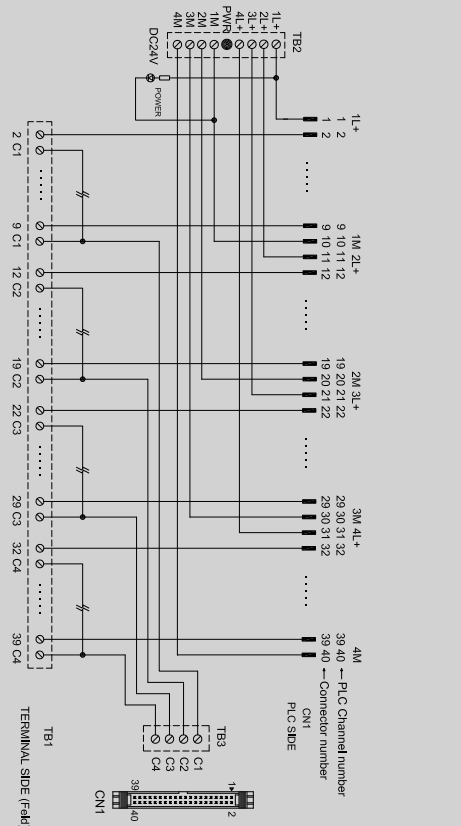
General data	
Ambient temperature	-25°C ~ 50°C
Storage temperature	-40°C ~ 60°C
Rated voltage	≤ 50V AC
Insulation test voltage	0.5KV DC
Weight 6.50 / 8.00	Approx. 429.4g / 736.8g

Dimensions	
Length x width x height (mm)	6.50 Pitch 227 x 45.5 x 61 8.00 Pitch 290 x 87.5 x 73.3
Mounting rail	TS35 (Weidmuller)

Ordering data	
Order No.	
624217021 (6.50 Pitch)	824220022 (8.00 Pitch)

Accessories / Spare part	
Terminal markers	6.50 8.00 DEK 5/8
Cross-connector	6.50 COM-6509 8.00 COM-8009

Use with	
Front connector	Cable
S7-300S-DA40P	DHH40-10K25L Page : 107 DAHHC40-10K24B Page : 106

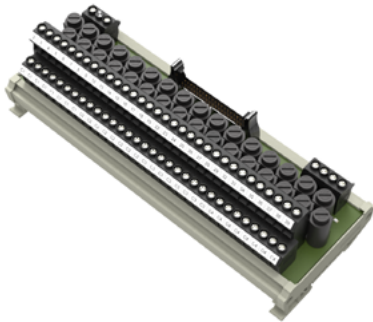
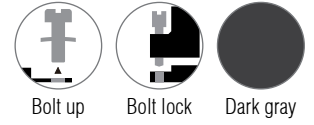


Digital input 32 point

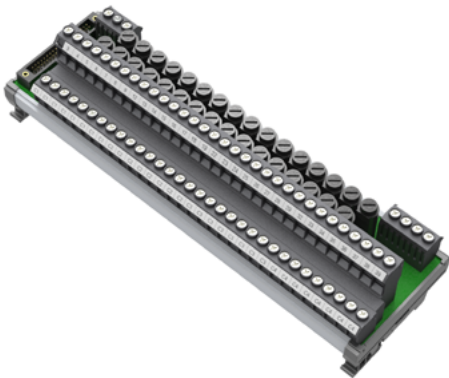
For 32 digital signals with fuse per channel

6ES7321-1BL00-0AA0

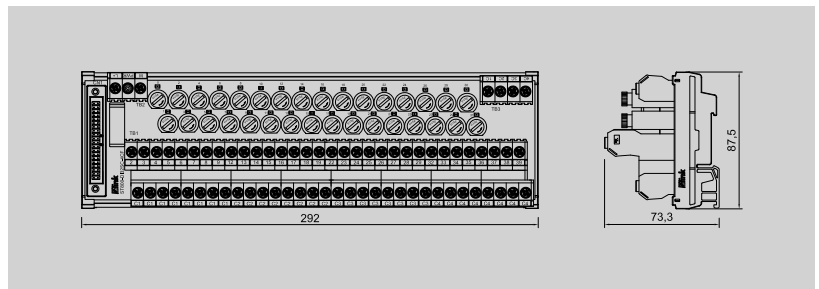
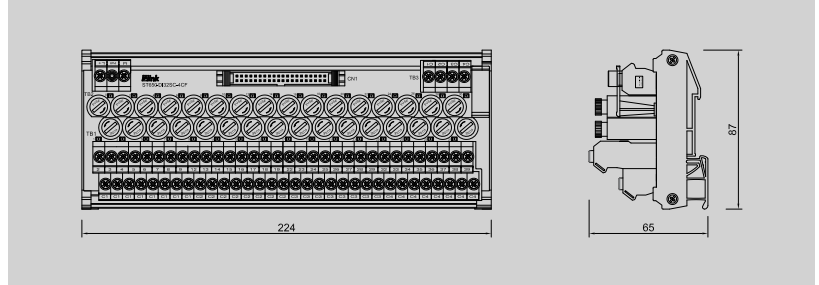
ST650 / ST800 40P series



ST650-DI32SC-4CF 6.50 Pitch



ST800-DI32SC-4CF 8.00 Pitch



Technical data

Connection data	
Connection to PLC	HE 10 connectors 40-pin
Connection type (field)	Screw bolt up
Connection size (field)	0.34 ~ 2.5mm ² (AWG22 ~ 14)

Input-output data	
Operating voltage	24VDC ± 10%
Max. current for channel	1.5A
Number of signs	32
PLC card supply voltage / LED voltage status	24VDC ± 10% / LED green
LED fuse indication per channel	Red
PLC card supply current	2A
Fuse per channel	100 ~ 500mA

General data	
Ambient temperature	-25°C ~ 50°C
Storage temperature	-40°C ~ 60°C
Rated voltage	≤ 50V AC
Insulation test voltage	0.5KV DC
Weight 6.50 / 8.00	Approx. 583.0g / 802.8g

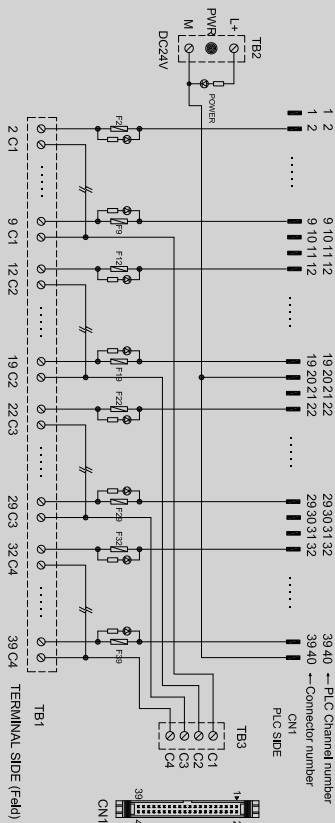
Dimensions	
Length x width x height (mm)	6.50 Pitch 224 x 87 x 65
	8.00 Pitch 292 x 87.5 x 73.3

Mounting rail	TS35 (Weidmuller)
---------------	-------------------

Ordering data	
Order No.	
624217023 (6.50 Pitch)	824220024 (8.00 Pitch)

Accessories / Spare part	
Terminal markers	6.50 8.00 DEK 5/8
Cross-connector	6.50 COM-6509 8.00 COM-8009

Use with	
Front connector	Cable
S7-300S-DA40P	DHH40-10K25L Page : 107
	DAHHC40-10K24B Page : 106

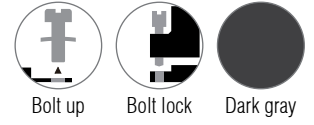


Digital output 32 point

For 32 digital signals with fuse per channel

6ES7322-1BL00-0AA0 / 6ES7322-8BH10-0AB0

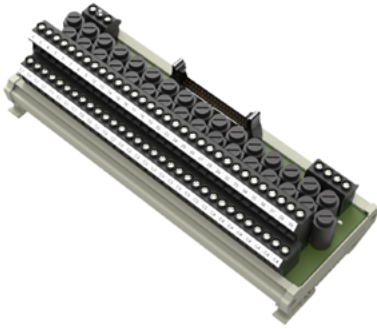
ST650 / ST800 40P series



Bolt up

Bolt lock

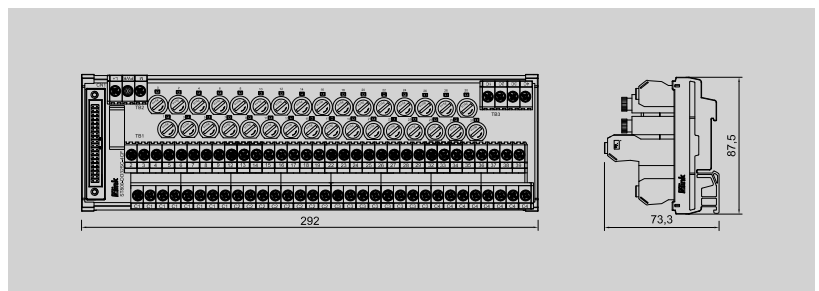
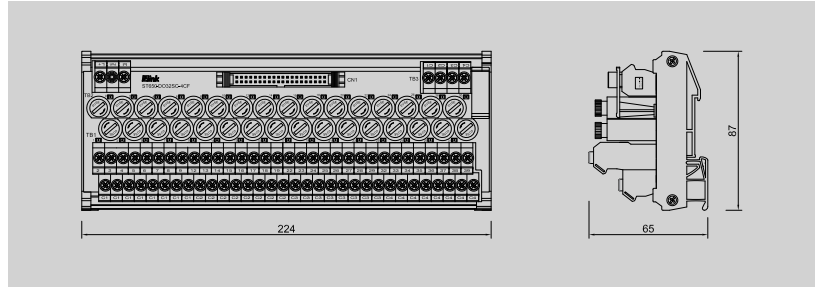
Dark gray



ST650-D032SC-4CF 6.50 Pitch



ST800-D032SC-4CF 8.00 Pitch



Technical data

Connection data	
Connection to PLC	HE 10 connectors 40-pin
Connection type (field)	Screw bolt up
Connection size (field)	0.34 – 2.5mm ² (AWG22 – 14)

Input-output data	
Operating voltage	24VDC ± 10%
Max. current for channel	1.5A
Number of signs	32
PLC card supply voltage / LED voltage status	24VDC ± 10% / LED green
LED fuse indication per channel	Red
PLC card supply current	2A
Fuse per channel	100 – 500mA

General data	
Ambient temperature	-25°C – 50°C
Storage temperature	-40°C – 60°C
Rated voltage	≤ 50V AC
Insulation test voltage	0.5KV DC
Weight 6.50 / 8.00	Approx. 583.0g / 802.8g

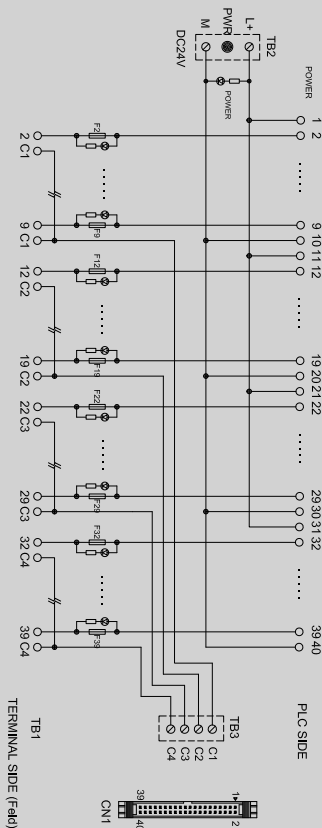
Dimensions	
Length x width x height (mm)	6.50 Pitch 224 x 87 x 65 8.00 Pitch 292 x 87.5 x 73.3

Mounting rail	TS35 (Weidmuller)
---------------	-------------------

Ordering data	
Order No.	
624217025 (6.50 Pitch)	824220026 (8.00 Pitch)

Accessories / Spare part	
Terminal markers	6.50 8.00 DEK 5/8
Cross-connector	6.50 COM-6509 8.00 COM-8009

Use with	
Front connector	Cable
S7-300S-DA40P	DHH40-10K25L Page : 107 DAHHC40-10K24B Page : 106



Digital input 32 point

For 32 digital signals with fuse or disconnection per channel

6ES7321-1BL00-0AA0

ST650 / ST800 40P series



Bolt up



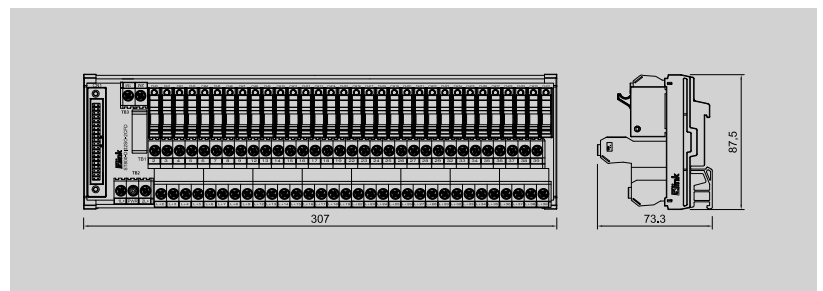
Bolt lock



Dark gray



ST800-DI32SC-2CFD 8.00 Pitch (P-COM, Fast-acting fuse)



Technical data

Connection data	
Connection to PLC	HE 10 connectors 40-pin
Connection type (field)	Screw bolt up
Connection size (field)	0.34 – 2.5mm ² (AWG22 – 14)

Input-output data	
Operating voltage	24VDC ± 10%
Max. current for channel	1.5A
Number of signs	32
PLC card supply voltage / LED voltage status	24VDC ± 10% / LED green
LED fuse indication per channel	-
PLC card supply current	2A
Fuse per channel	100 – 500mA

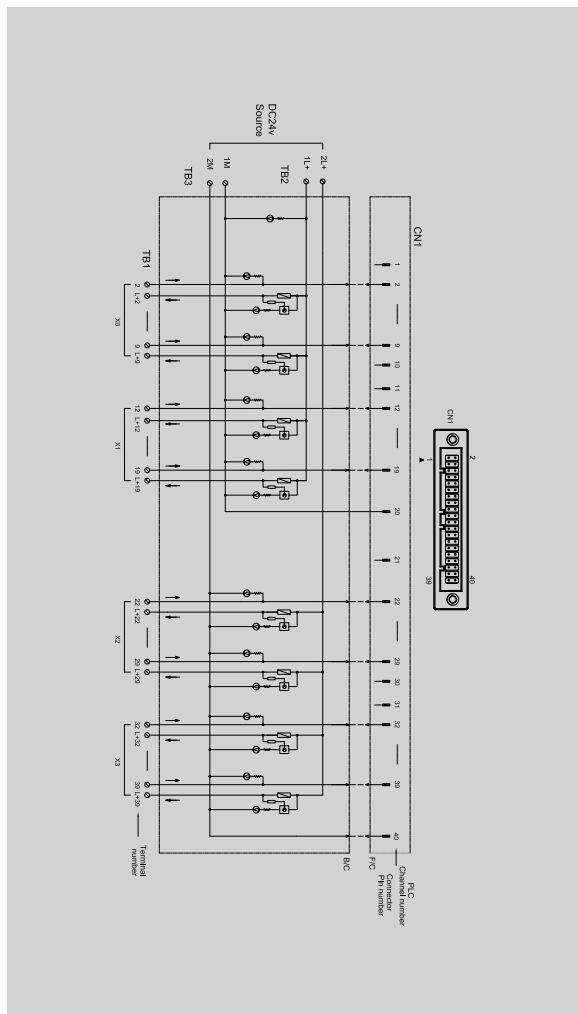
General data	
Ambient temperature	-25°C – 50°C
Storage temperature	-40°C – 60°C
Rated voltage	≤ 50V AC
Insulation test voltage	0.5KV DC
Weight 6.50 / 8.00	Approx. ---g / 802.3g

Dimensions	
Length x width x height (mm)	6.50 Pitch -
	8.00 Pitch 307 x 87.5 x 73.3
Mounting rail	TS35 (Weidmuller)

Ordering data	
Order No.	
--- (6.50 Pitch)	824220027 (8.00 Pitch)

Accessories / Spare part	
Terminal markers	6.50 8.00 DEK 5/8
Cross-connector	6.50 8.00 COM-8009

Use with	
Front connector	Cable
S7-300S-DA40P	DAHHC4010-10K24B

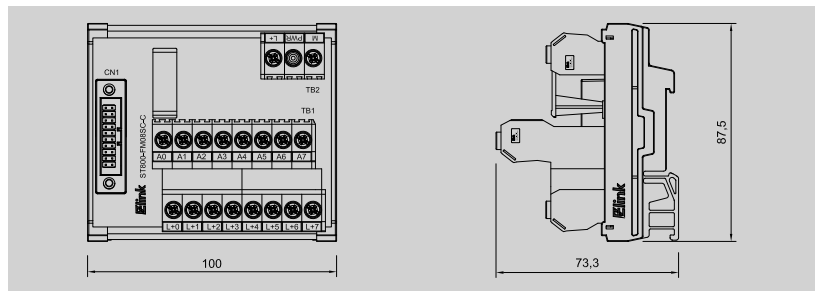
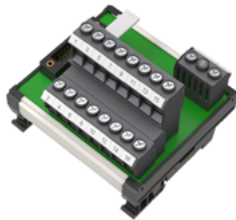
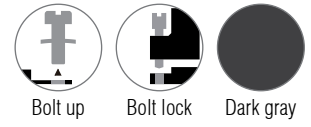


Digital counter

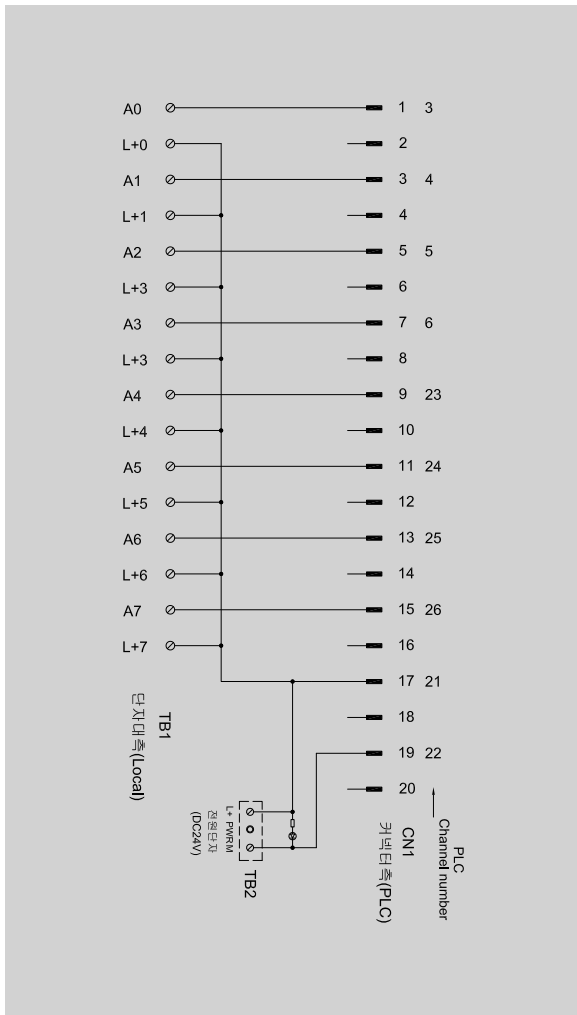
For 8 digital signals (40P front connector)

6ES7350-2AH00-0AE0

ST800 40P series



ST800-FM08SC-C 8.00 Pitch



Technical data

Connection data	
Connection to PLC	HE 10 connectors 20-pin
Connection type (field)	Screw bolt up
Connection size (field)	0.34 ~ 2.5mm ² (AWG22 ~ 14)

Input-output data	
Operating voltage	24VDC ± 10%
Max. current for channel	1.5A
Number of signals	16
PLC card supply voltage / LED voltage status	24VDC ± 10% / LED green
LED fuse indication per channel	-
PLC card supply current	2A
Fuse per channel	-

General data	
Ambient temperature	-25°C ~ 50°C
Storage temperature	-40°C ~ 60°C
Rated voltage	≤ 50V AC
Insulation test voltage	0.5KV DC
Weight 6.50 / 8.00	Approx. ---g / 174.9g

Dimensions	
Length x width x height (mm)	6.50 Pitch -
	8.00 Pitch 100 x 87.5 x 73.3

Mounting rail	TS35 (Weidmuller)
---------------	-------------------

Ordering data	
Order No.	
--- (6.50 Pitch)	824519028 (8.00 Pitch)

Accessories / Spare part	
Terminal markers	6.50 8.00 DEK 5/8
Cross-connector	6.50 8.00 COM-8009

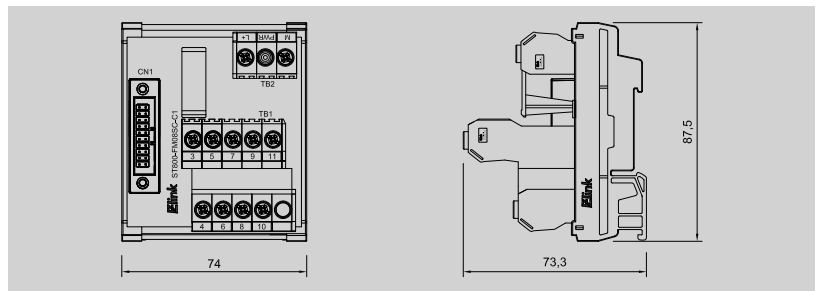
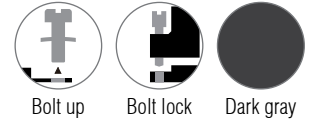
Use with	
Front connector	Cable
S7-300S-DA40P	DAHHC4010-10K24B

Digital counter

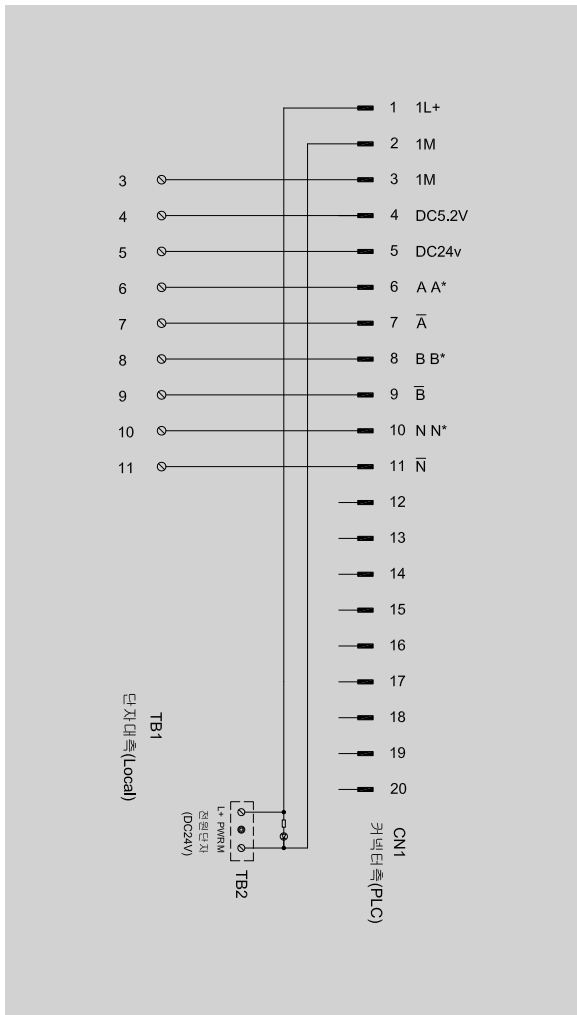
For 9 digital signals (20P front connector)

6ES7350-1AH03-0AE0

ST800 20P series



ST800-FM08SC-C1 8.00 Pitch



Technical data

Connection data	
Connection to PLC	HE 10 connectors 20-pin
Connection type (field)	Screw bolt up
Connection size (field)	0.34 ~ 2.5mm ² (AWG22 ~ 14)

Input-output data	
Operating voltage	24VDC ± 10%
Max. current for channel	1.5A
Number of signals	9
PLC card supply voltage / LED voltage status	24VDC ± 10% / LED green
LED fuse indication per channel	-
PLC card supply current	2A
Fuse per channel	-

General data	
Ambient temperature	-25°C ~ 50°C
Storage temperature	-40°C ~ 60°C
Rated voltage	≤ 50V AC
Insulation test voltage	0.5KV DC
Weight 6.50 / 8.00	Approx. ---g / 123.9g

Dimensions	
Length x width x height (mm)	6.50 Pitch -
	8.00 Pitch 74 x 87.5 x 73.3

Mounting rail	TS35 (Weidmuller)
---------------	-------------------

Ordering data	
Order No.	
--- (6.50 Pitch)	822519029 (8.00 Pitch)

Accessories / Spare part	
Terminal markers	6.50 8.00 DEK 5/8
Cross-connector	6.50 8.00 COM-8009

Use with	
Front connector	Cable
S7-300S-DA20P	DAHHC20-10K24B

Digital counter

For 16 digital signals (40P front connector)

6ES7350-2AH01-0AE0

ST800 40P series



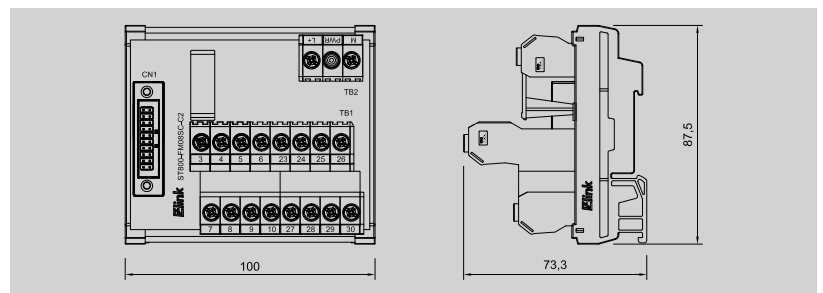
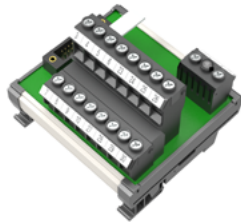
Bolt up



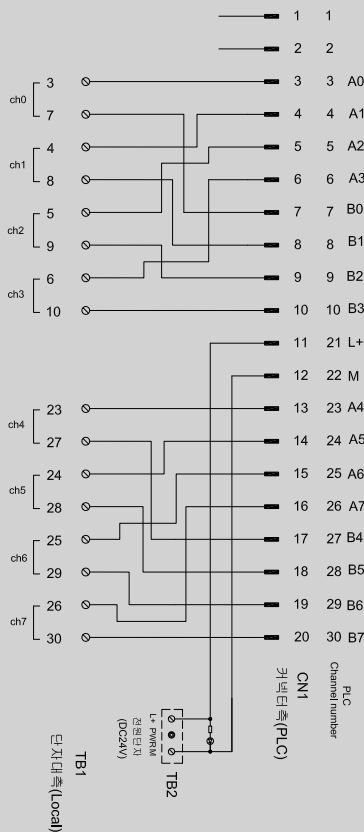
Bolt lock



Dark gray



ST800-FM08SC-C2 8.00 Pitch



Technical data

Connection data	
Connection to PLC	HE 10 connectors 20-pin
Connection type (field)	Screw bolt up
Connection size (field)	0.34 ~ 2.5mm ² (AWG22 ~ 14)

Input-output data	
Operating voltage	24VDC ± 10%
Max. current for channel	1.5A
Number of signals	16
PLC card supply voltage / LED voltage status	24VDC ± 10% / LED green
LED fuse indication per channel	-
PLC card supply current	2A
Fuse per channel	-

General data	
Ambient temperature	-25°C ~ 50°C
Storage temperature	-40°C ~ 60°C
Rated voltage	≤ 50V AC
Insulation test voltage	0.5KV DC
Weight 6.50 / 8.00	Approx. ---g / 174.9g

Dimensions	
Length x width x height (mm)	6.50 Pitch -
	8.00 Pitch 100 x 87.5 x 73.3

Mounting rail	TS35 (Weidmuller)
----------------------	-------------------

Ordering data	
Order No.	---
---	(6.50 Pitch) 824519030 (8.00 Pitch)

Accessories / Spare part	
Terminal markers	6.50 8.00 DEK 5/8
Cross-connector	6.50 8.00 COM-8009

Use with	
Front connector	Cable
S7-300S-DA40P	DAHHC4020-10K24B

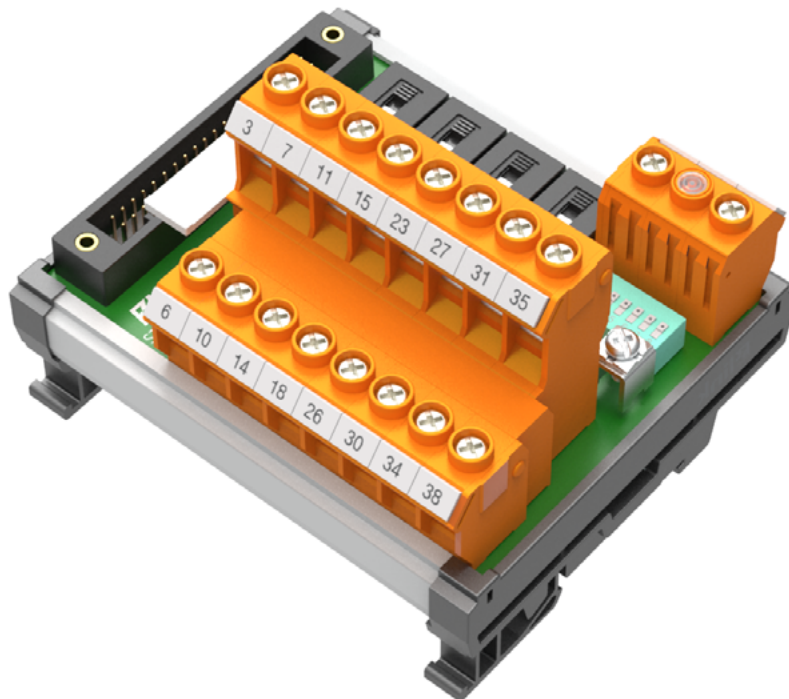
Analog I/O interface units

For SIEMENS S7-300 dedicated boards

ST650 / ST800 시리즈 전용 단자대 모듈은 지멘스 PLC 6ES7300시리즈 I/O Module에 최적화되어 손쉽게 와이어링 할 수 있으며 최상의 커넥션을 위해 개발된 제품입니다.

A

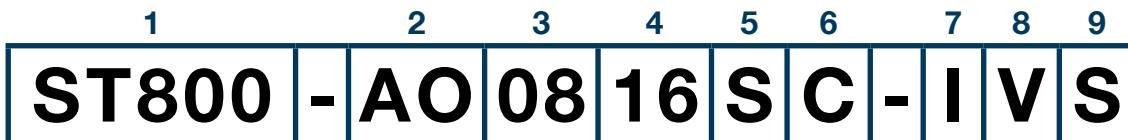
- Bolt-up (terminal block)
- Compact design
- Power indicator
- DIN (rail mounted type)
- Dual marking



EZlink terminal blocks

ST650 / ST800 series

Product constitution



1. ST800

- Terminal block
 - 650 : 6.5 Pitch
 - 800 : 8.0 Pitch

2. AO

- Card form
 - AI : Analog input
 - AO : Analog output
 - AIO : Analog in / output

3. 08

- Channels

4. 16

- Signal point

5. S

- Applicable PLC
 - S : SIEMENS
 - R : Allen-Bradley

6. C

- Power supply
 - C : Integrated power supply
 - M : Individual power supply

7. I

- Current

8. V

- Voltage

9. S

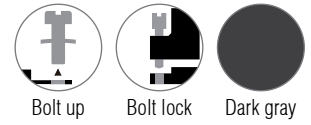
- Switch

Analog in / output 18 point

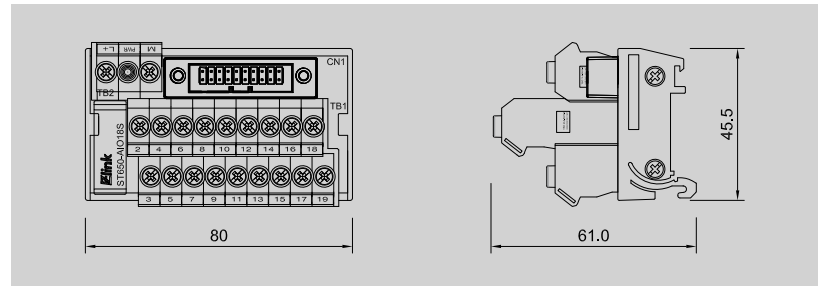
For 4 and 8 analog signals

6ES7331-7HF00-0AB0 / 6ES7331-7HF01-0AB0 / 6ES7331-7KF02-0AB0 / 6ES7331-7KB02-0AB0
 6ES7331-7TF01-0AB0 / 6ES7331-7RD00-0AB0 / 6ES7332-5HD01-0AB0 / 6ES7332-7ND02-0AB0
 6ES7332-8TF01-0AB0 / 6ES7332-5RD00-0AB0 / 6ES7334-0CE01-0AA0 / 6ES7334-0KE00-0AB0

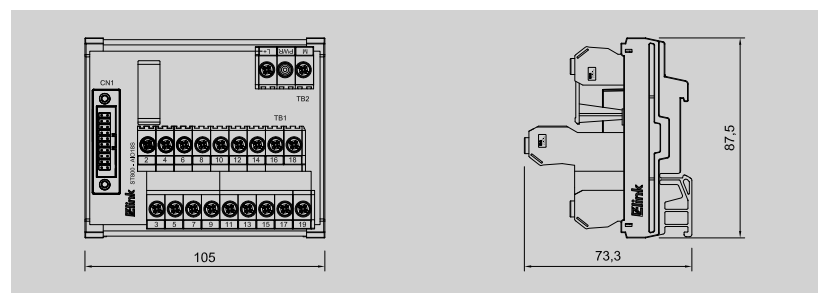
ST650 / ST800 20P series



ST650-AI018S 6.50 Pitch



ST800-AI018S 8.00 Pitch



Technical data

Connection data	
Connection to PLC	HE 10 connectors 20-pin
Connection type (field)	Screw bolt up
Connection size (field)	0.34 ~ 2.5mm ² (AWG22 ~ 14)

Input-output data	
Operating voltage	24VDC ± 10%
Max. current for channel	1.5A
Number of signals	18
PLC card supply voltage / LED voltage status	24VDC ± 10% / LED green
LED fuse indication per channel	-
PLC card supply current	2A
Fuse per channel	-

General data	
Ambient temperature	-25°C ~ 50°C
Storage temperature	-40°C ~ 60°C
Rated voltage	≤ 50V AC
Insulation test voltage	0.5KV DC
Weight 6.50 / 8.00	Approx. 108.9g / 189.9g

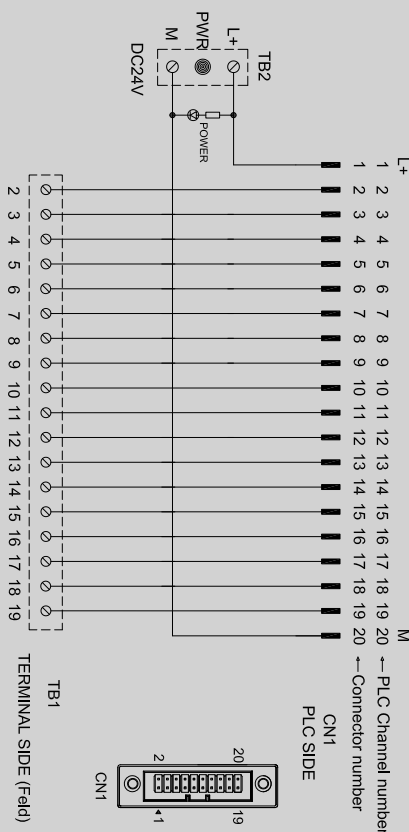
Dimensions	
Length x width x height (mm)	6.50 Pitch 80 x 45.5 x 61 8.00 Pitch 105 x 87.5 x 73.3

Mounting rail	
TS35 (Weidmuller)	

Ordering data	
Order No.	
622317001 (6.50 Pitch)	822320002 (8.00 Pitch)

Accessories / Spare part	
Terminal markers	6.50 8.00 DEK 5/8
Cross-connector	6.50 COM-6509 8.00 COM-8009

Use with	
Front connector	Cable
S7-300S-DA20P	DAHHC20-10K24B Page : 104 DAHHC20-10K25B Page : 104

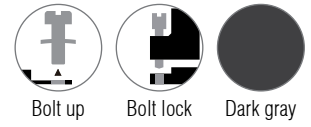


Analog in / output 18 point

For 4 and 8 analog signals with fuse per channel

6ES7331-7HF00-0AB0 / 6ES7331-7HF01-0AB0 / 6ES7331-7KF02-0AB0 / 6ES7331-7KB02-0AB0
 6ES7331-7TF01-0AB0 / 6ES7331-7RD00-0AB0 / 6ES7332-5HD01-0AB0 / 6ES7332-7ND02-0AB0
 6ES7332-8TF01-0AB0 / 6ES7332-5RD00-0AB0 / 6ES7334-0CE01-0AA0 / 6ES7334-0KE00-0AB0

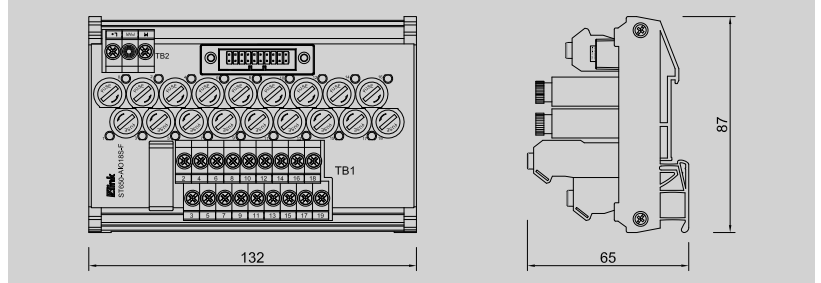
ST650 / ST800 20P series



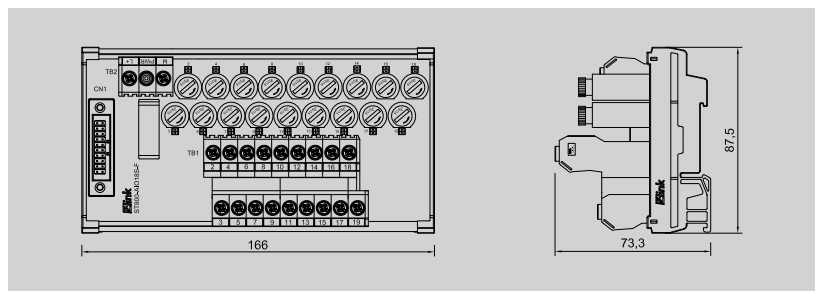
Bolt up Bolt lock Dark gray



ST650-AI018S-F 6.50 Pitch



ST800-AI018S-F 8.00 Pitch



Technical data

Connection data	
Connection to PLC	HE 10 connectors 20-pin
Connection type (field)	Screw bolt up
Connection size (field)	0.34 ~ 2.5mm ² (AWG22 ~ 14)

Input-output data	
Operating voltage	24VDC ± 10%
Max. current for channel	1.5A
Number of signs	18
PLC card supply voltage / LED voltage status	24VDC ± 10% / LED green
LED fuse indication per channel	Red
PLC card supply current	2A
Fuse per channel	100 ~ 500mA

General data	
Ambient temperature	-25°C ~ 50°C
Storage temperature	-40°C ~ 60°C
Rated voltage	≤ 50V AC
Insulation test voltage	0.5KV DC
Weight 6.50 / 8.00	Approx. 230.0g / 284.8g

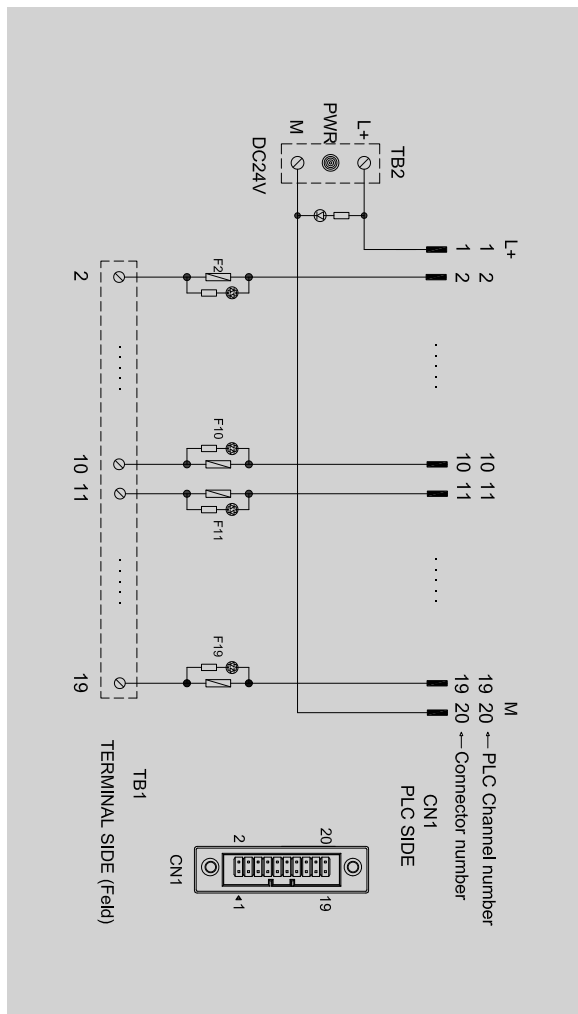
Dimensions		
Length x width x height (mm)	6.50 Pitch	132 x 87 x 65
	8.00 Pitch	168 x 87.5 x 73.3

Mounting rail	TS35 (Weidmuller)
---------------	-------------------

Ordering data	
Order No.	
622317003 (6.50 Pitch)	822320004 (8.00 Pitch)

Accessories / Spare part	
Terminal markers	6.50 8.00 DEK 5/8
Cross-connector	6.50 COM-6509 8.00 COM-8009

Use with	
Front connector	Cable
S7-300S-DA20P	DAHHC20-10K24B Page : 104
	DAHHC20-10K25B Page : 104

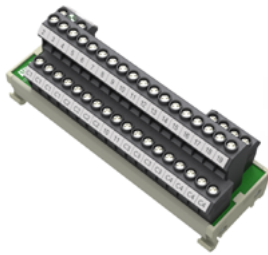
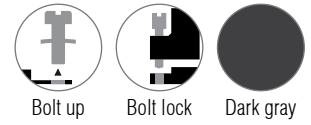


Analog input 18 point

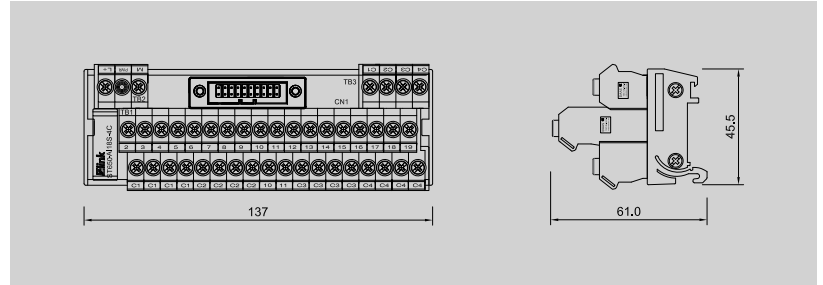
For 4 and 8 analog signals

6ES7331-7HF00-0AB0 / 6ES7331-7HF01-0AB0
6ES7331-7KF02-0AB0

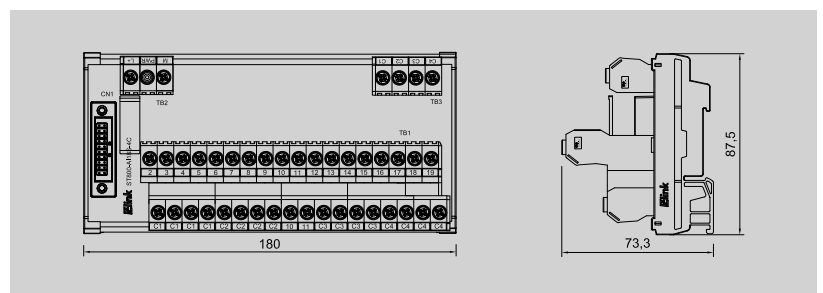
ST650 / ST800 20P series



ST650-AI18S-4C 6.50 Pitch



ST800-AI18S-4C 8.00 Pitch



Technical data

Connection data	
Connection to PLC	HE 10 connectors 20-pin
Connection type (field)	Screw bolt up
Connection size (field)	0.34 ~ 2.5mm ² (AWG22 ~ 14)

Input-output data	
Operating voltage	24VDC ± 10%
Max. current for channel	1.5A
Number of signs	18
PLC card supply voltage / LED voltage status	24VDC ± 10% / LED green
LED fuse indication per channel	-
PLC card supply current	2A
Fuse per channel	-

General data	
Ambient temperature	-25°C ~ 50°C
Storage temperature	-40°C ~ 60°C
Rated voltage	≤ 50V AC
Insulation test voltage	0.5KV DC
Weight 6.50 / 8.00	Approx. 191.1g / 336.9g

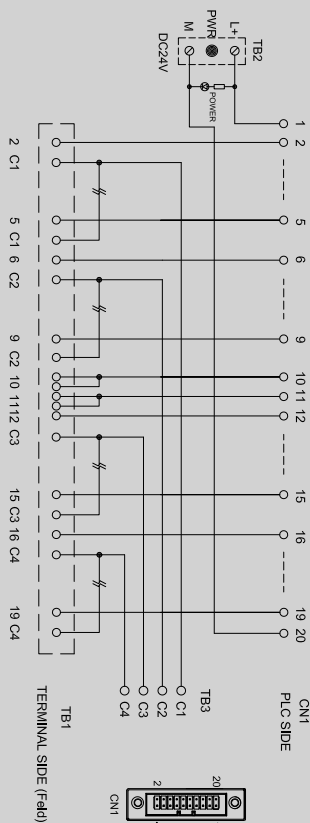
Dimensions	
Length x width x height (mm)	6.50 Pitch 137 x 45.5 x 61 8.00 Pitch 180 x 87.5 x 73.3

Mounting rail	TS35 (Weidmuller)
---------------	-------------------

Ordering data	
Order No.	
622317005 (6.50 Pitch)	822320006 (8.00 Pitch)

Accessories / Spare part	
Terminal markers	6.50 8.00 DEK 5/8
Cross-connector	6.50 COM-6509 8.00 COM-8009

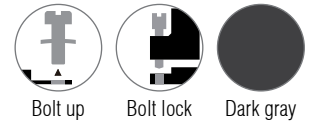
Use with	
Front connector	Cable
S7-300S-DA20P	DAHHC20-10K24B Page : 104 DAHHC20-10K25B Page : 104



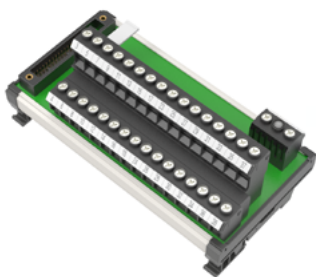
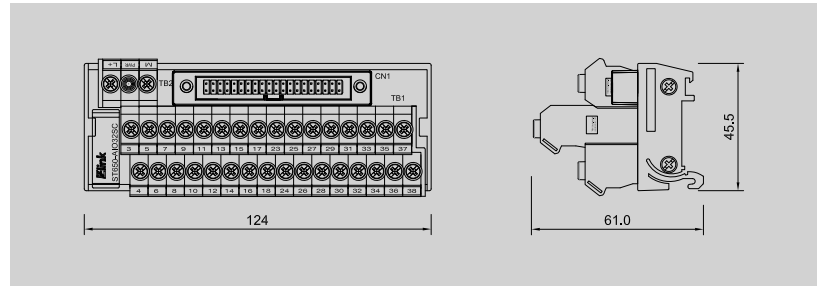
Analog in / output 32 point
For 8 and 16 analog signals

6ES7331-7NF10-0AB0 / 6ES7331-7PF01-0AB0 (RTD)
6ES7332-5HF00-0AB0 (voltage, current)

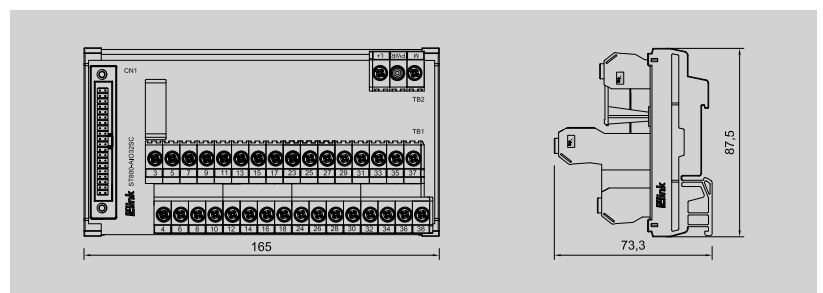
ST650 / ST800 40P series



ST650-AI032SC 6.50 Pitch



ST800-AI032SC 8.00 Pitch



Technical data

Connection data	
Connection to PLC	HE 10 connectors 40-pin
Connection type (field)	Screw bolt up
Connection size (field)	0.34 ~ 2.5mm ² (AWG22 ~ 14)

Input-output data	
Operating voltage	24VDC ± 10%
Max. current for channel	1.5A
Number of signs	32
PLC card supply voltage / LED voltage status	24VDC ± 10% / LED green
LED fuse indication per channel	-
PLC card supply current	2A
Fuse per channel	-

General data	
Ambient temperature	-25°C ~ 50°C
Storage temperature	-40°C ~ 60°C
Rated voltage	≤ 50V AC
Insulation test voltage	0.5KV DC
Weight 6.50 / 8.00	Approx. 184.6g / 311.0g

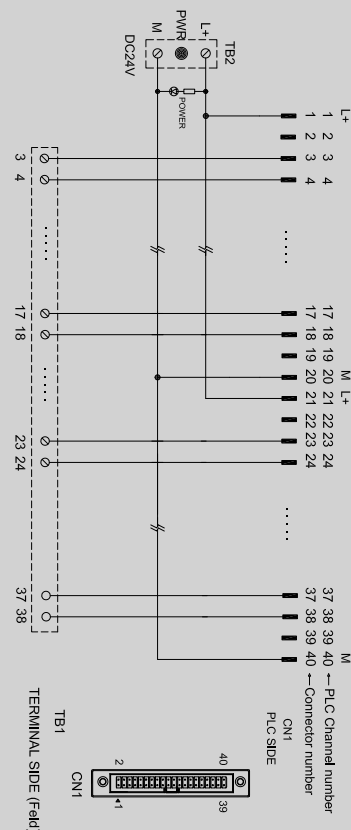
Dimensions	
Length x width x height (mm)	6.50 Pitch 124 x 45.5 x 61
	8.00 Pitch 165 x 87.5 x 73.3

Mounting rail	TS35 (Weidmuller)
----------------------	-------------------

Ordering data	
Order No.	
624317007 (6.50 Pitch)	824320008 (8.00 Pitch)

Accessories / Spare part	
Terminal markers	6.50 8.00 DEK 5/8
Cross-connector	6.50 COM-6509 8.00 COM-8009

Use with	
Front connector	Cable
S7-300S-DA40P	DAHHC40-10K24B Page : 106
	DAHHC40-10K25B Page : 106



Analog in / output 32 point

For 8 and 16 analog signals with fuse per channel

6ES7331-7NF10-0AB0 / 6ES7331-7PF01-0AB0 (RTD)

6ES7332-5HF00-0AB0 (voltage, current)

ST650 / ST800 40P series



Bolt up



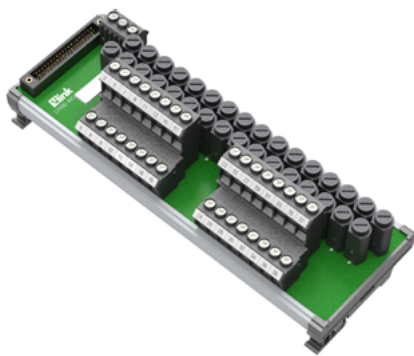
Bolt lock



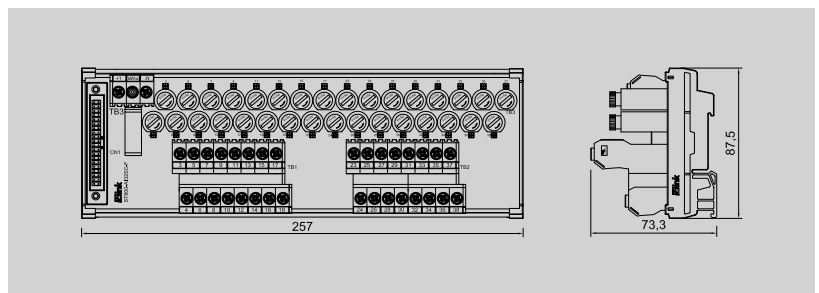
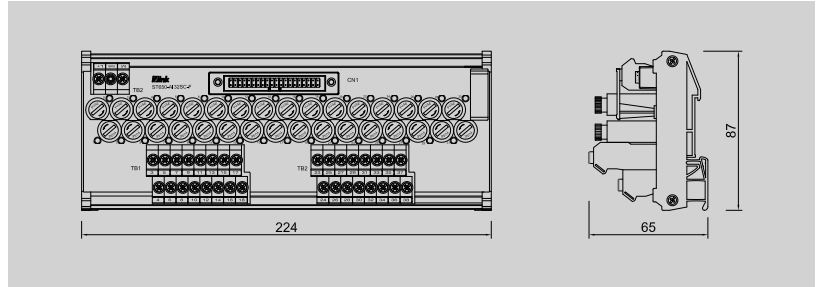
Dark gray



ST650-AI032SC-F 6.50 Pitch



ST800-AI032SC-F 8.00 Pitch



Technical data

Connection data	
Connection to PLC	HE 10 connectors 40-pin
Connection type (field)	Screw bolt up
Connection size (field)	0.34 ~ 2.5mm ² (AWG22 ~ 14)

Input-output data	
Operating voltage	24VDC ± 10%
Max. current for channel	1.5A
Number of signs	32
PLC card supply voltage / LED voltage status	24VDC ± 10% / LED green
LED fuse indication per channel	Red
PLC card supply current	2A
Fuse per channel	100 ~ 500mA

General data	
Ambient temperature	-25°C ~ 50°C
Storage temperature	-40°C ~ 60°C
Rated voltage	≤ 50V AC
Insulation test voltage	0.5KV DC
Weight 6.50 / 8.00	Approx. 388.4g / 461.7g

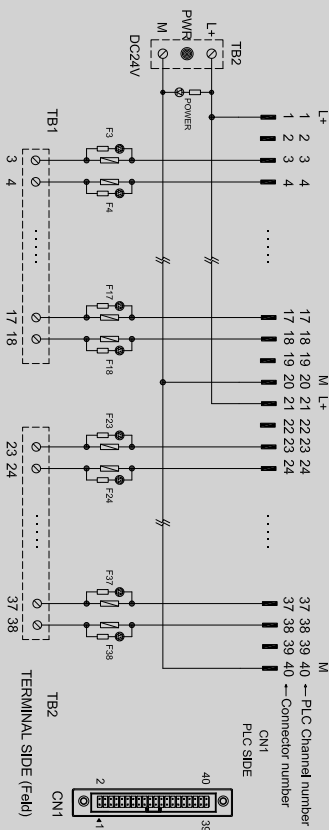
Dimensions	
Length x width x height (mm)	6.50 Pitch 224 x 87 x 65
	8.00 Pitch 257 x 87.5 x 73.3

Mounting rail	TS35 (Weidmuller)
---------------	-------------------

Ordering data	
Order No.	
624317009 (6.50 Pitch)	824320010 (8.00 Pitch)

Accessories / Spare part	
Terminal markers	6.50 8.00 DEK 5/8
Cross-connector	6.50 COM-6509 8.00 COM-8009

Use with	
Front connector	Cable
S7-300S-DA40P	DAHHC40-10K24B Page : 106
	DAHHC40-10K25B Page : 106

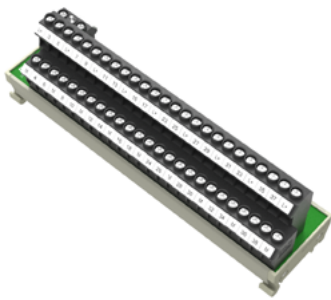
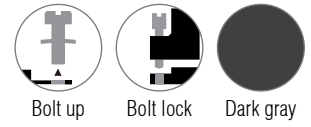


Analog input 32 point

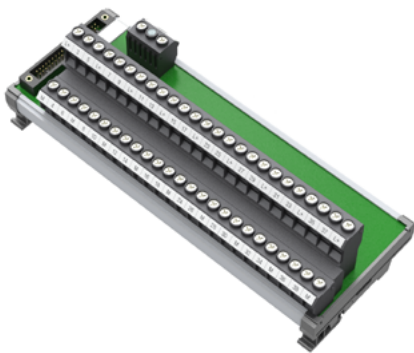
For 8 and 16 analog signals

6ES7331-7NF10-0AB0

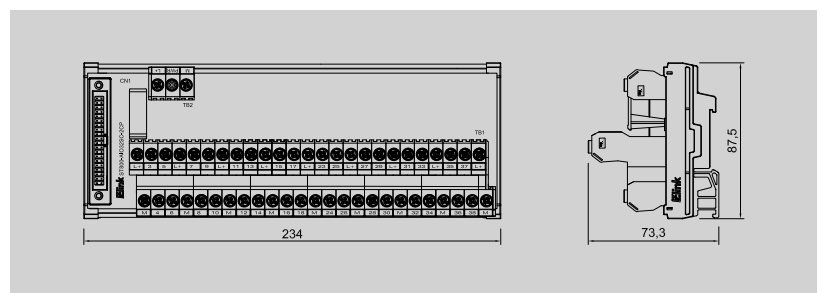
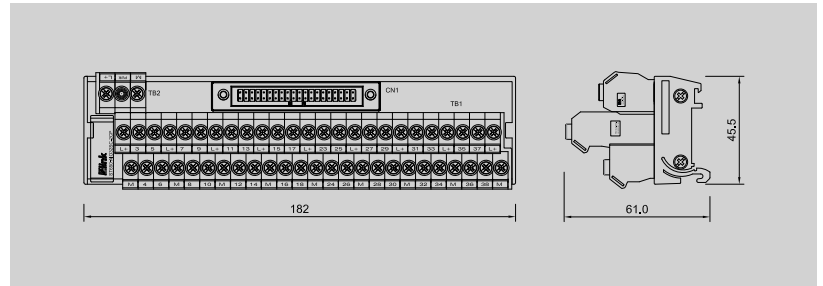
ST650 / ST800 40P series



ST650-AI32SC-2CP 6.50 Pitch



ST800-AI32-2CP 8.00 Pitch



Technical data

Connection data	
Connection to PLC	HE 10 connectors 40-pin
Connection type (field)	Screw bolt up
Connection size (field)	0.34 – 2.5mm ² (AWG22 – 14)

Input-output data	
Operating voltage	24VDC ± 10%
Max. current for channel	1.5A
Number of signals	32
PLC card supply voltage / LED voltage status	24VDC ± 10% / LED green
LED fuse indication per channel	-
PLC card supply current	2A
Fuse per channel	-

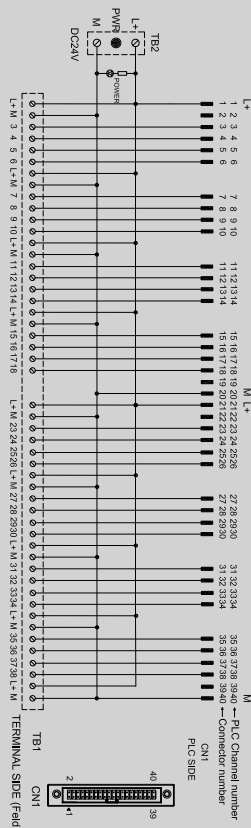
General data	
Ambient temperature	-25°C – 50°C
Storage temperature	-40°C – 60°C
Rated voltage	≤ 50V AC
Insulation test voltage	0.5KV DC
Weight 6.50 / 8.00	Approx. 263.1g / 459.1g

Dimensions	
Length x width x height (mm)	6.50 Pitch 182 x 45.5 x 61
	8.00 Pitch 234 x 87.5 x 73.3
Mounting rail	TS35 (Weidmuller)

Ordering data	
Order No.	
624317011 (6.50 Pitch)	824320012 (8.00 Pitch)

Accessories / Spare part	
Terminal markers	6.50 8.00 DEK 5/8
Cross-connector	6.50 COM-6509 8.00 COM-8009

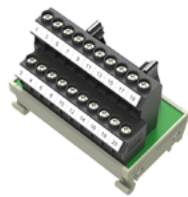
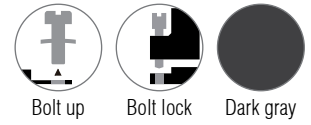
Use with	
Front connector	Cable
S7-300S-DA40P	DAHHC40-10K24B Page : 106
	DAHHC40-10K25B Page : 106



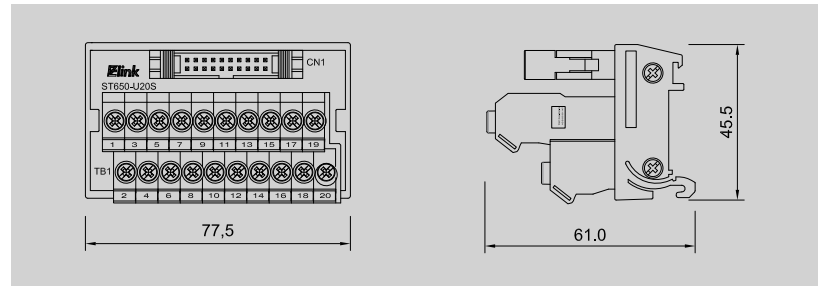
Universal type 20 point
For universal signals (multi)

Available to all 20p card

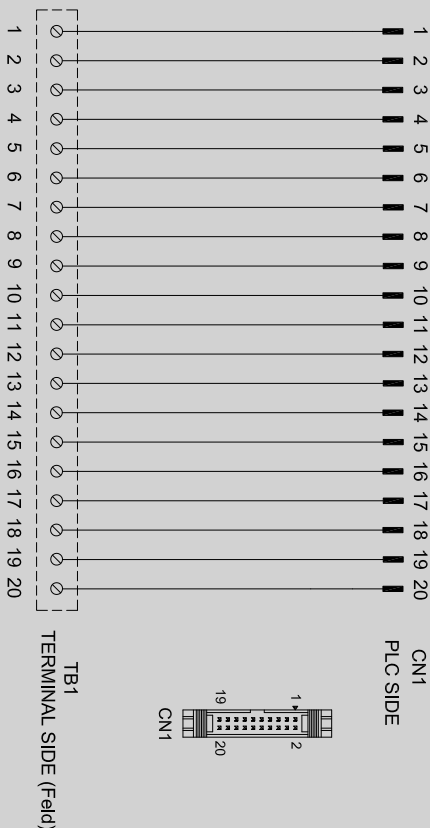
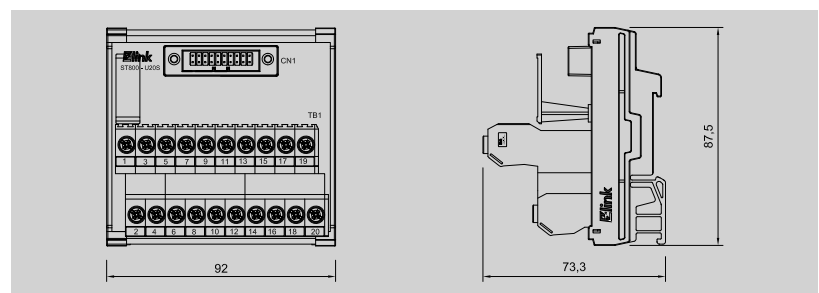
ST650 / ST800 20P series



ST650-U20S 6.50 Pitch



ST800-U20S 8.00 Pitch



Technical data

Connection data	
Connection to PLC	HE 10 connectors 20-pin
Connection type (field)	Screw bolt up
Connection size (field)	0.34 ~ 2.5mm ² (AWG22 ~ 14)

Input-output data	
Operating voltage	24VDC ± 10%
Max. current for channel	1.5A
Number of signals	20
PLC card supply voltage / LED voltage status	24VDC ± 10% / LED green
LED fuse indication per channel	-
PLC card supply current	-
Fuse per channel	-

General data	
Ambient temperature	-25°C ~ 50°C
Storage temperature	-40°C ~ 60°C
Rated voltage	≤ 50V AC
Insulation test voltage	0.5KV DC
Weight 6.50 / 8.00	Approx. 107.2g / 193.5g

Dimensions	
Length x width x height (mm)	6.50 Pitch 77.5 x 45.5 x 61
	8.00 Pitch 92 x 87.5 x 73.3

Mounting rail	TS35 (Weidmuller)
----------------------	-------------------

Ordering data	
Order No.	
622117013 (6.50 Pitch)	822120014 (8.00 Pitch)

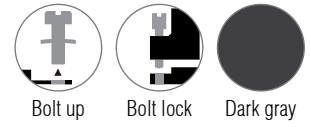
Accessories / Spare part	
Terminal markers	6.50 8.00 DEK 5/8
Cross-connector	6.50 COM-6509 8.00 COM-8009

Use with	
Front connector	Cable
S7-300S-DA20P	DHH20-10K25L Page : 105
	DAHHC20-10K24B Page : 104

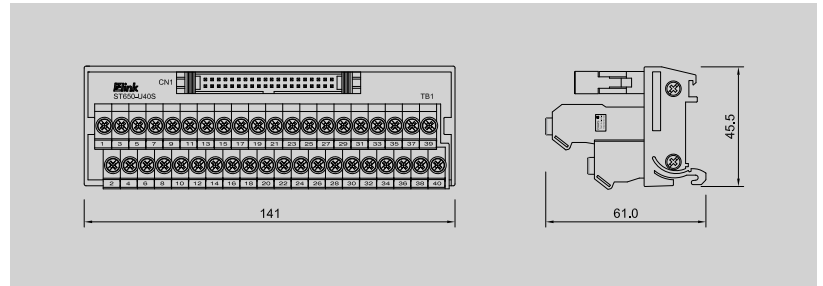
Universal type 40 point
For universal signals (multi)

Available to all 40p card

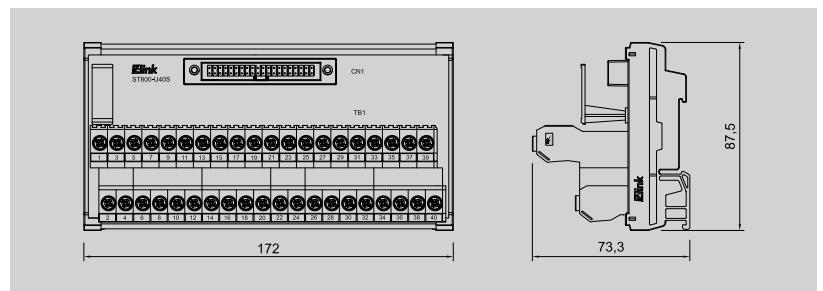
ST650 / ST800 40P series



ST650-U40S 6.50 Pitch



ST800-U40S 8.00 Pitch



Technical data

Connection data	
Connection to PLC	HE 10 connectors 40-pin
Connection type (field)	Screw bolt up
Connection size (field)	0.34 ~ 2.5mm ² (AWG22 ~ 14)

Input-output data	
Operating voltage	24VDC ± 10%
Max. current for channel	1.5A
Number of signals	40
PLC card supply voltage / LED voltage status	24VDC ± 10% / LED green
LED fuse indication per channel	-
PLC card supply current	-
Fuse per channel	-

General data	
Ambient temperature	-25°C ~ 50°C
Storage temperature	-40°C ~ 60°C
Rated voltage	≤ 50V AC
Insulation test voltage	0.5KV DC
Weight 6.50 / 8.00	Approx. 206.6g / 360.6g

Dimensions		
Length x width x height (mm)	6.50 Pitch	141 x 45.5 x 61
	8.00 Pitch	172 x 87.5 x 73.3

Mounting rail	TS35 (Weidmuller)
----------------------	-------------------

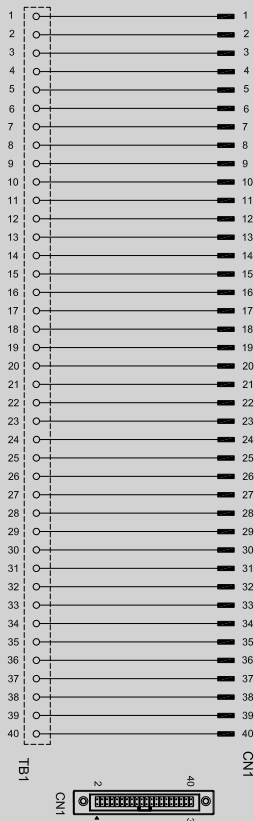
Ordering data

Order No.	
624117015 (6.50 Pitch)	824120016 (8.00 Pitch)

Accessories / Spare part		
Terminal markers	6.50	8.00 DEK 5/8
Cross-connector	6.50 COM-6509	8.00 COM-8009

Use with

Front connector		Cable	
S7-300S-DA20P	Page : 98	DHH40-10K25L	Page : 107
		DAHHC40-10K24B	Page : 106

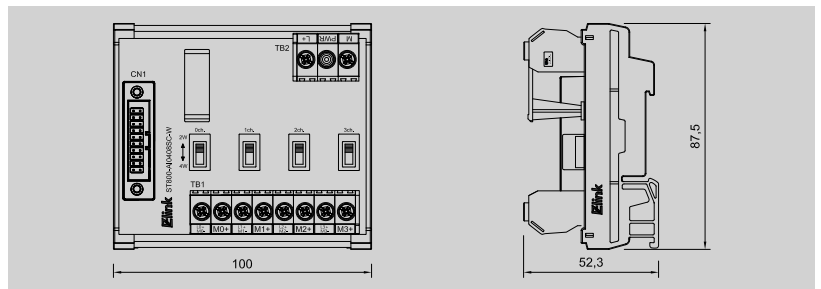
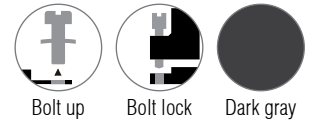


Analog input 8 point

For 4 analog signals (combined current and voltage)

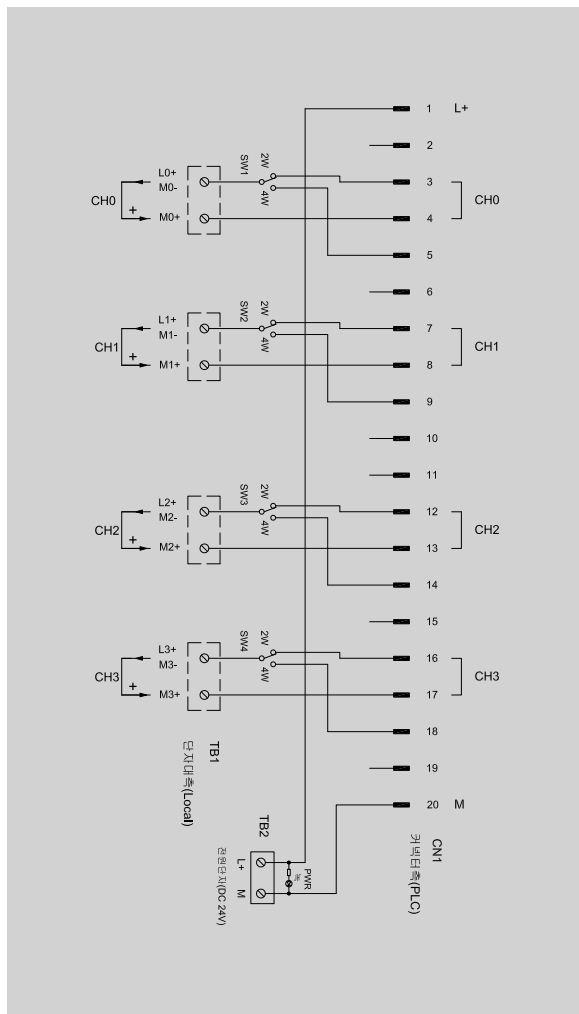
6ES7331-7RD00-0AB0 (current - combined 2wire and 4wire)

ST800 20P series



A

ST800-AI0408-W 8.00 Pitch



Technical data

Connection data	
Connection to PLC	HE 10 connectors 20-pin
Connection type (field)	Screw bolt up
Connection size (field)	0.34 ~ 2.5mm ² (AWG22 ~ 14)

Input-output data	
Operating voltage	24VDC ± 10%
Max. current for channel	1.5A
Number of signals	8
PLC card supply voltage / LED voltage status	24VDC ± 10% / LED green
LED fuse indication per channel	-
PLC card supply current	2A
Fuse per channel	-

General data	
Ambient temperature	-25°C ~ 50°C
Storage temperature	-40°C ~ 60°C
Rated voltage	≤ 50V AC
Insulation test voltage	0.5KV DC
Weight 6.50 / 8.00	Approx. ---g / 119.6g

Dimensions	
Length x width x height (mm)	6.50 Pitch -
	8.00 Pitch 100 x 87.5 x 52.3

Mounting rail	TS35 (Weidmuller)
----------------------	-------------------

Ordering data	
Order No.	
--- (6.50 Pitch)	822319017 (8.00 Pitch)

Accessories / Spare part	
Terminal markers	6.50 8.00 DEK 5/8
Cross-connector	6.50 8.00 COM-8009

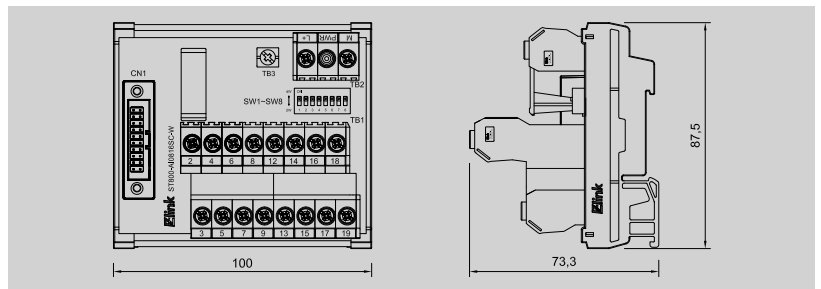
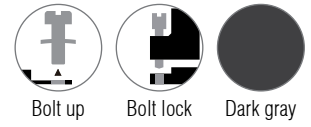
Use with	
Front connector	Cable
S7-300S-DA20P	DAHHC20-10K24B

Analog input 16 point

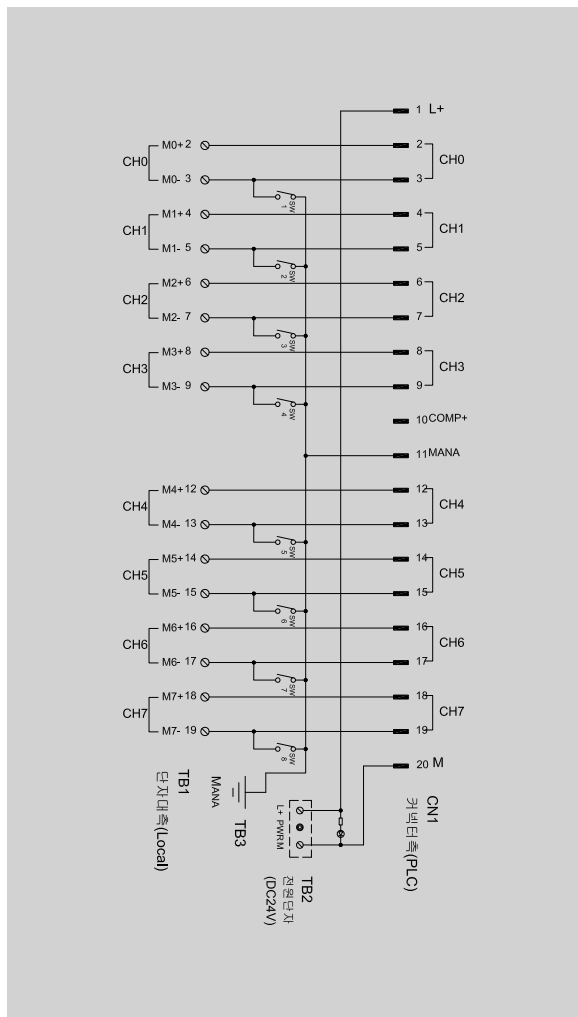
For 8 analog signals (combined current and voltage)

6ES7331-7KF02-0AB0 (current - combined 2wire and 4wire)

ST800 20P series



ST800-AI0816SC-W 8.00 Pitch



Technical data

Connection data	
Connection to PLC	HE 10 connectors 20-pin
Connection type (field)	Screw bolt up
Connection size (field)	0.34 ~ 2.5mm ² (AWG22 ~ 14)

Input-output data	
Operating voltage	24VDC ± 10%
Max. current for channel	1.5A
Number of signals	16
PLC card supply voltage / LED voltage status	24VDC ± 10% / LED green
LED fuse indication per channel	-
PLC card supply current	2A
Fuse per channel	-

General data	
Ambient temperature	-25°C ~ 50°C
Storage temperature	-40°C ~ 60°C
Rated voltage	≤ 50V AC
Insulation test voltage	0.5KV DC
Weight	Approx. ---g / 180.2g

Dimensions	
Length x width x height (mm)	6.50 Pitch -
	8.00 Pitch 100 x 87.5 x 73.3

Mounting rail	TS35 (Weidmuller)
---------------	-------------------

Ordering data	
Order No.	
--- (6.50 Pitch)	822319018 (8.00 Pitch)

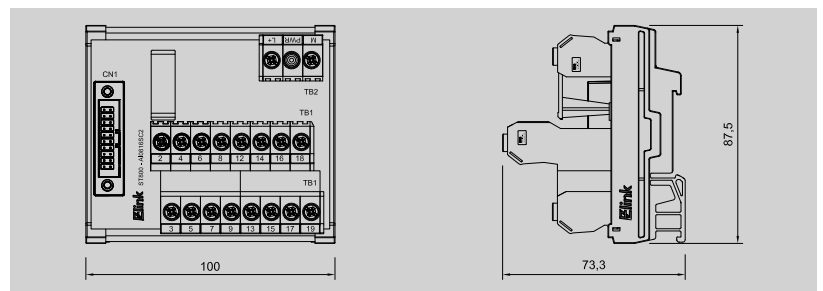
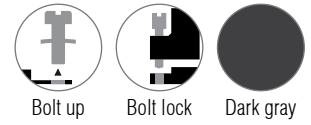
Accessories / Spare part	
Terminal markers	6.50 8.00 DEK 5/8
Cross-connector	6.50 8.00 COM-8009

Use with	
Front connector	Cable
S7-300S-DA20P	DAHHC20-10K24B

Analog input 16 point
For 8 analog signals (current)

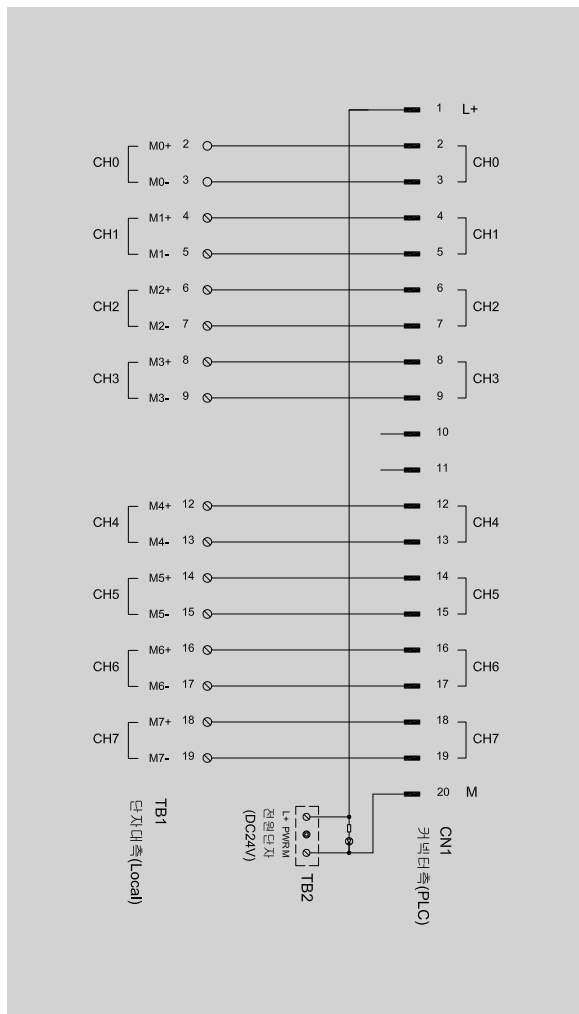
6ES7331-7KF02-0AB0 (current - 2wire)

ST800 20P series



A

ST800-AI0816SC2 8.00 Pitch



Technical data

Connection data	
Connection to PLC	HE 10 connectors 20-pin
Connection type (field)	Screw bolt up
Connection size (field)	0.34 ~ 2.5mm ² (AWG22 ~ 14)

Input-output data	
Operating voltage	24VDC ± 10%
Max. current for channel	1.5A
Number of signals	16
PLC card supply voltage / LED voltage status	24VDC ± 10% / LED green
LED fuse indication per channel	-
PLC card supply current	2A
Fuse per channel	-

General data	
Ambient temperature	-25°C ~ 50°C
Storage temperature	-40°C ~ 60°C
Rated voltage	≤ 50V AC
Insulation test voltage	0.5KV DC
Weight 6.50 / 8.00	Approx. ---g / 174.9g

Dimensions	
Length x width x height (mm)	6.50 Pitch -
	8.00 Pitch 100 x 87.5 x 73.3

Mounting rail	TS35 (Weidmuller)
----------------------	-------------------

Ordering data	
Order No.	
--- (6.50 Pitch)	822319019 (8.00 Pitch)

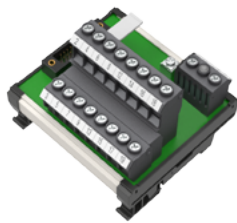
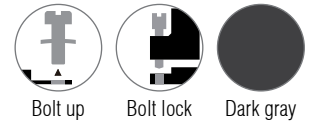
Accessories / Spare part	
Terminal markers	6.50 8.00 DEK 5/8
Cross-connector	6.50 8.00 COM-8009

Use with	
Front connector	Cable
S7-300S-DA20P	DAHHC20-10K24B

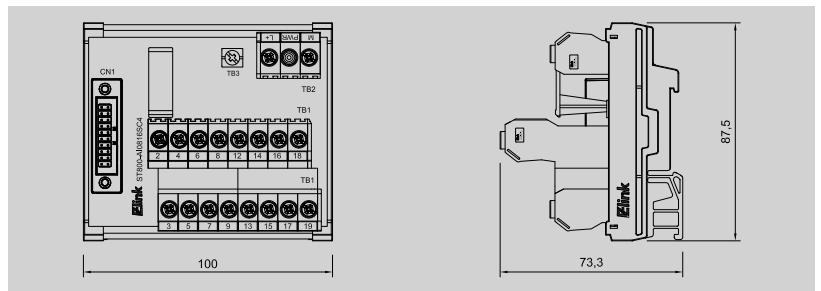
Analog input 16 point
For 8 analog signals (current)

6ES7331-7KF02-0AB0 (current - 4wire)

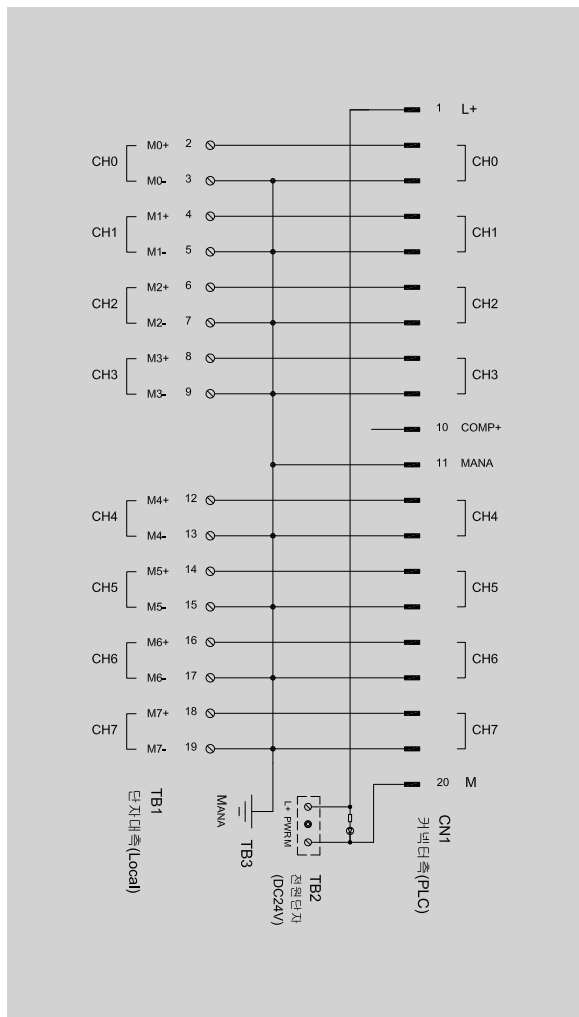
ST800 20P series



A



ST800-AI0816SC4 8.00 Pitch



Technical data

Connection data	
Connection to PLC	HE 10 connectors 20-pin
Connection type (field)	Screw bolt up
Connection size (Field)	0.34 ~ 2.5mm ² (AWG22 ~ 14)
Input-output data	
Operating voltage	24VDC ± 10%
Max. current for channel	1.5A
Number of signals	16
PLC card supply voltage / LED voltage status	24VDC ± 10% / LED green
LED fuse indication per channel	-
PLC card supply current	2A
Fuse per channel	-
General data	
Ambient temperature	-25°C ~ 50°C
Storage temperature	-40°C ~ 60°C
Rated voltage	≤ 50V AC
Insulation test voltage	0.5KV DC
Weight 6.50 / 8.00	Approx. ---g / 177.9g
Dimensions	
Length x width x height (mm)	6.50 Pitch - 8.00 Pitch 100 x 87.5 x 73.3
Mounting rail	
TS35 (Weidmuller)	
Ordering data	
Order No.	---
--- (6.50 Pitch)	822319020 (8.00 Pitch)
Accessories / Spare part	
Terminal markers	6.50 8.00 DEK 5/8
Cross-connector	6.50 8.00 COM-8009
Use with	
Front connector	Cable
S7-300S-DA20P	DAHHC20-10K24B
Page : 98	Page : 104

Analog output 8 point

For 4 analog signals

6ES7332-5RD00-0AB0 (current - 2wire)

ST800 20P series



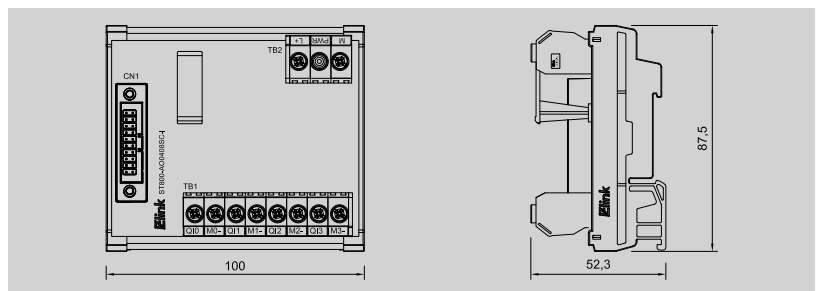
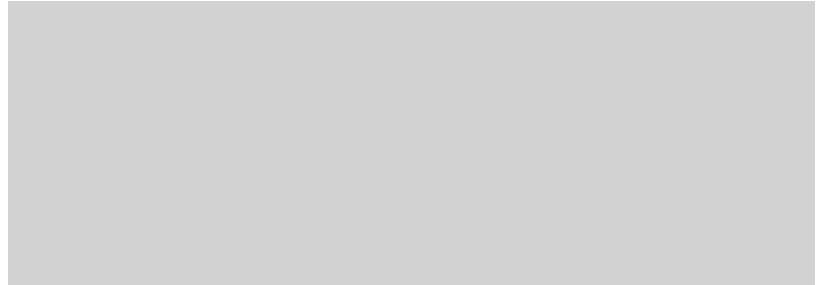
Bolt up



Bolt lock



Dark gray



Technical data

Connection data	
Connection to PLC	HE 10 connectors 20-pin
Connection type (field)	Screw bolt up
Connection size (field)	0.34 ~ 2.5mm ² (AWG22 ~ 14)

Input-output data	
Operating voltage	24VDC ± 10%
Max. current for channel	1.5A
Number of signals	8
PLC card supply voltage / LED voltage status	24VDC ± 10% / LED green
LED fuse indication per channel	-
PLC card supply current	2A
Fuse per channel	-

General data	
Ambient temperature	-25°C ~ 50°C
Storage temperature	-40°C ~ 60°C
Rated voltage	≤ 50V AC
Insulation test voltage	0.5KV DC
Weight 6.50 / 8.00	Approx. ---g / 115.2g

Dimensions	
Length x width x height (mm)	6.50 Pitch -
	8.00 Pitch 100 x 87.5 x 52.3

Mounting rail	
	TS35 (Weidmuller)

Ordering data

Order No.	
--- (6.50 Pitch)	822320021 (8.00 Pitch)

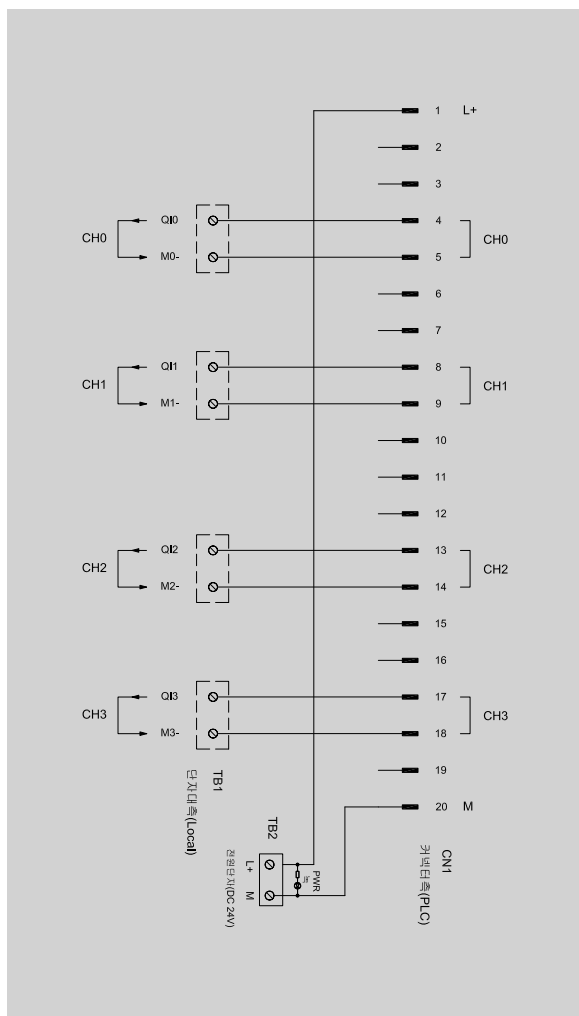
Accessories / Spare part

Terminal markers	6.50	8.00 DEK 5/8
Cross-connector	6.50	8.00 COM-8009

Use with

Front connector		Cable
S7-300S-DA20P	Page : 98	DAHHC20-10K24B Page : 104

ST800-A00408SC-I 8.00 Pitch



Analog output 8 point

For 4 analog signals

6ES7332-5HD01-0AB0 (current - 2wire)

ST800 20P series



Bolt up



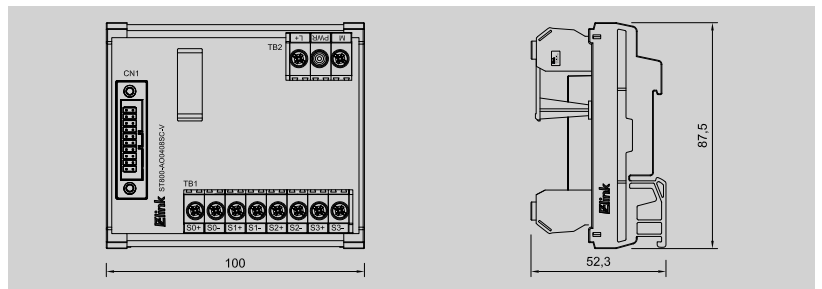
Bolt lock



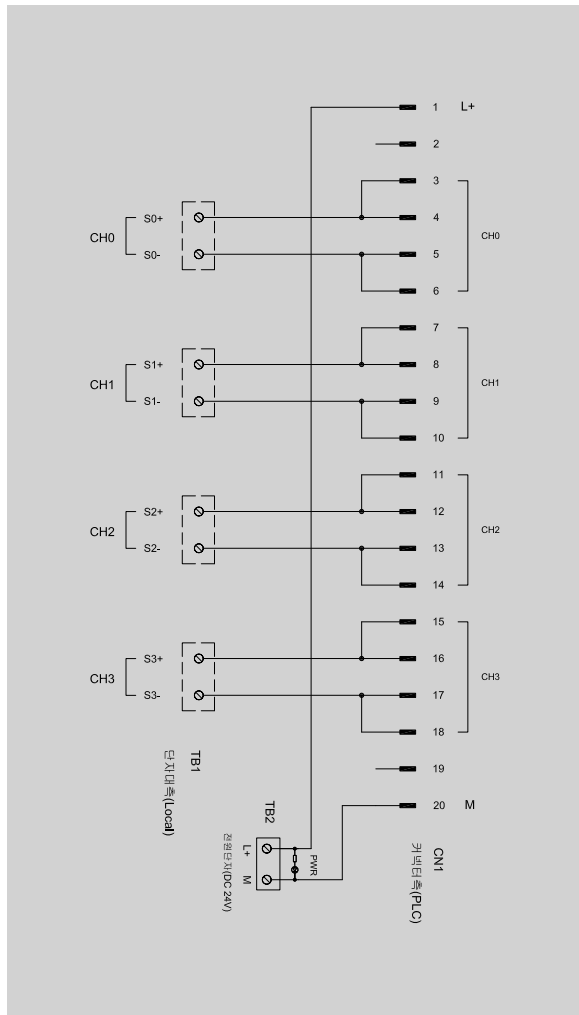
Dark gray



A



ST800-A00408SC-V 8.00 Pitch



Technical data

Connection data	
Connection to PLC	HE 10 connectors 20-pin
Connection type (field)	Screw bolt up
Connection size (field)	0.34 ~ 2.5mm ² (AWG22 ~ 14)

Input-output data	
Operating voltage	24VDC ± 10%
Max. current for channel	1.5A
Number of signals	8
PLC card supply voltage / LED voltage status	24VDC ± 10% / LED green
LED fuse indication per channel	-
PLC card supply current	2A
Fuse per channel	-

General data	
Ambient temperature	-25°C ~ 50°C
Storage temperature	-40°C ~ 60°C
Rated voltage	≤ 50V AC
Insulation test voltage	0.5KV DC
Weight 6.50 / 8.00	Approx. ---g / 115.2g

Dimensions	
Length x width x height (mm)	6.50 Pitch -
	8.00 Pitch 100 x 87.5 x 52.3

Mounting rail	TS35 (Weidmuller)
----------------------	-------------------

Ordering data	
Order No.	
--- (6.50 Pitch)	822320022 (8.00 Pitch)

Accessories / Spare part	
Terminal markers	6.50 8.00 DEK 5/8
Cross-connector	6.50 8.00 COM-8009

Use with	
Front connector	Cable
S7-300S-DA20P	DAHHC20-10K24B

Page : 98

Page : 104

Analog output 16 point

For 8 analog signals

6ES7332-5HF00-0AB0 (current - 2wire)

ST800 40P series



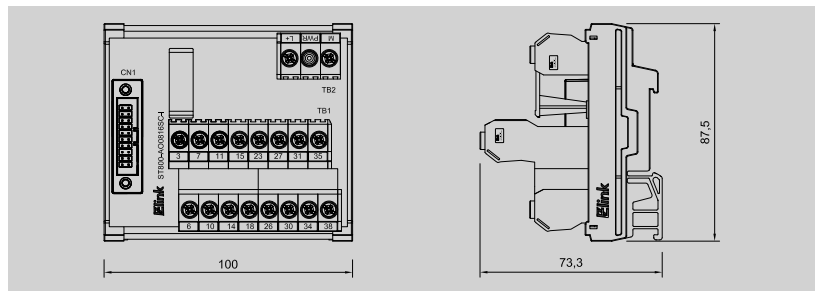
Bolt up



Bolt lock

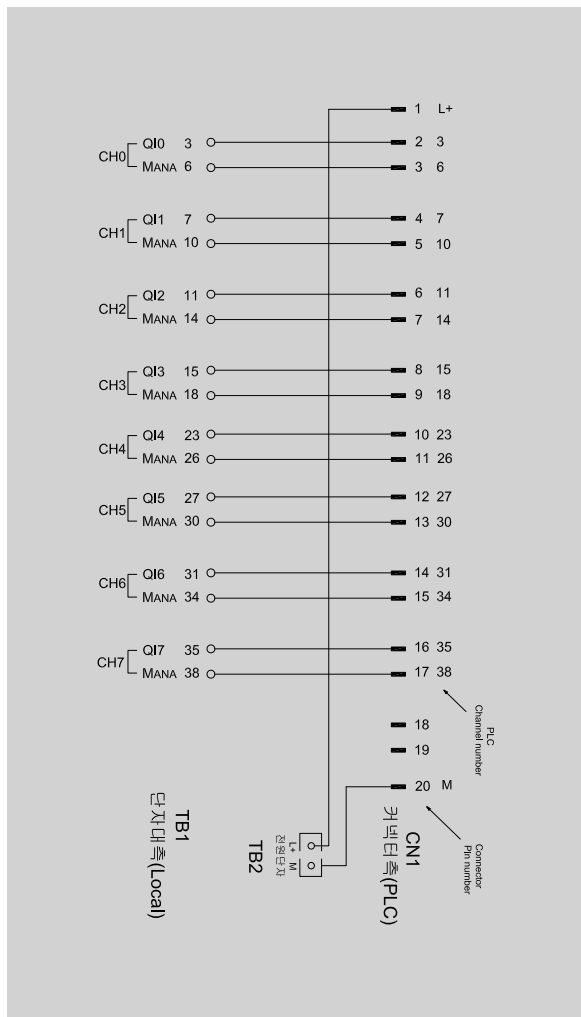


Dark gray



A

ST800-A00816SC-I 8.00 Pitch



Technical data

Connection data	
Connection to PLC	HE 10 connectors 20-pin
Connection type (field)	Screw bolt up
Connection size (field)	0.34 ~ 2.5mm ² (AWG22 ~ 14)

Input-output data	
Operating voltage	24VDC ± 10%
Max. current for channel	1.5A
Number of signals	16
PLC card supply voltage / LED voltage status	24VDC ± 10% / LED green
LED fuse indication per channel	-
PLC card supply current	2A
Fuse per channel	-

General data	
Ambient temperature	-25°C ~ 50°C
Storage temperature	-40°C ~ 60°C
Rated voltage	≤ 50V AC
Insulation test voltage	0.5KV DC
Weight 6.50 / 8.00	Approx. ---g / 174.9g

Dimensions	
Length x width x height (mm)	6.50 Pitch -
	8.00 Pitch 100 x 87.5 x 73.3

Mounting rail	TS35 (Weidmuller)
---------------	-------------------

Ordering data	
Order No.	
--- (6.50 Pitch)	824319023 (8.00 Pitch)

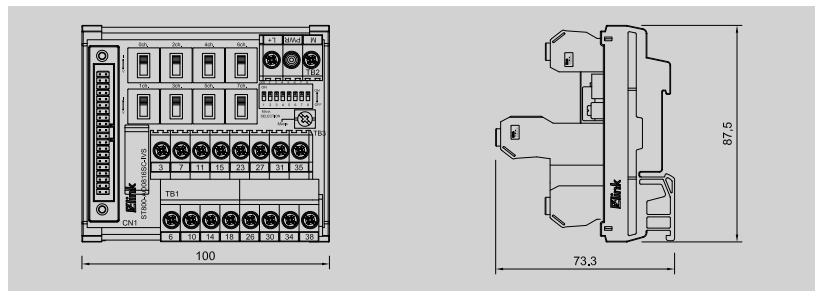
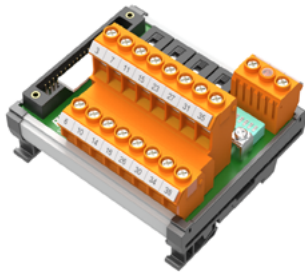
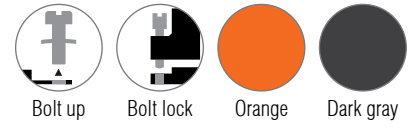
Accessories / Spare part	
Terminal markers	6.50 8.00 DEK 5/8
Cross-connector	6.50 8.00 COM-8009

Use with	
Front connector	Cable
S7-300S-DA40P	DAHHC4020-10K24B2

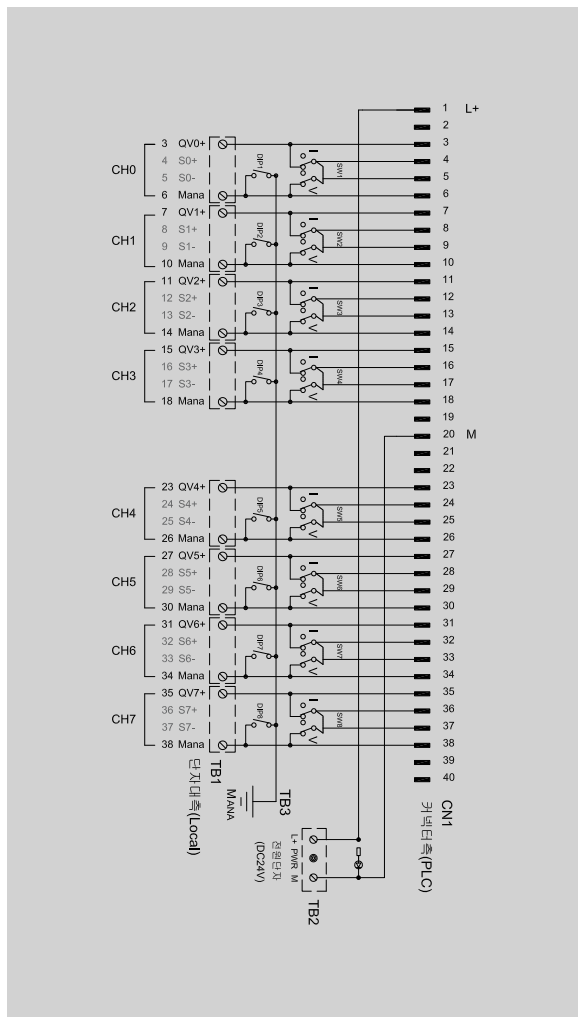
Analog output 16 point
For 8 analog signals

6ES7332-5HF00-0AB0
(combined current and voltage - 2wire MaNA ON / OFF)

ST800 40P series



ST800-A00816SC-IVS 8.00 Pitch



Technical data

Connection data	
Connection to PLC	HE 10 connectors 40-pin
Connection type (field)	Screw bolt up
Connection size (field)	0.34 ~ 2.5mm ² (AWG22 ~ 14)

Input-output data	
Operating voltage	24VDC ± 10%
Max. current for channel	1.5A
Number of signals	16
PLC card supply voltage / LED voltage status	24VDC ± 10% / LED green
LED fuse indication per channel	-
PLC card supply current	2A
Fuse per channel	-

General data	
Ambient temperature	-25°C ~ 50°C
Storage temperature	-40°C ~ 60°C
Rated voltage	≤ 50V AC
Insulation test voltage	0.5KV DC
Weight 6.50 / 8.00	Approx. ---g / 200.9g

Dimensions	
Length x width x height (mm)	6.50 Pitch - 8.00 Pitch 100 x 87.5 x 73.3

Mounting rail	TS35 (Weidmuller)
----------------------	-------------------

Ordering data	
Order No.	---
--- (6.50 Pitch)	824319024 (8.00 Pitch)

Accessories / Spare part	
Terminal markers	6.50 8.00 DEK 5/8
Cross-connector	6.50 8.00 COM-8009

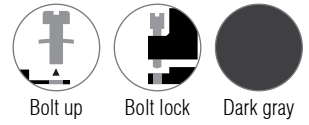
Use with	
Front connector	Cable
S7-300S-DA40P	DAHHC40-10K24B

Analog input 32 point

For 8 analog signals (RTD 8ch combined 3wire and 4wire)

6ES7331-7NF10-0AB0 / 6ES7331-7PF01-0AB0

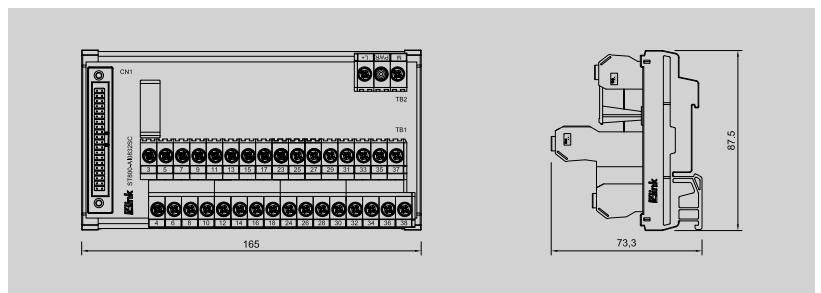
ST800 40P series



Bolt up

Bolt lock

Dark gray



Technical data

Connection data	
Connection to PLC	HE 10 connectors 40-pin
Connection type (field)	Screw bolt up
Connection size (field)	0.34 ~ 2.5mm ² (AWG22 ~ 14)

Input-output data	
Operating voltage	24VDC ± 10%
Max. current for channel	1.5A
Number of signals	32
PLC card supply voltage / LED voltage status	24VDC ± 10% / LED green
LED fuse indication per channel	-
PLC card supply current	2A
Fuse per channel	-

General data	
Ambient temperature	-25°C ~ 50°C
Storage temperature	-40°C ~ 60°C
Rated voltage	≤ 50V AC
Insulation test voltage	0.5KV DC
Weight 6.50 / 8.00	Approx. ---g / 311.0g

Dimensions	
Length x width x height (mm)	6.50 Pitch -
	8.00 Pitch 165 x 87.5 x 73.3
Mounting rail	TS35 (Weidmuller)

Ordering data	
Order No.	
--- (6.50 Pitch)	824319025 (8.00 Pitch)

Accessories / Spare part	
Terminal markers	6.50 8.00 DEK 5/8
Cross-connector	6.50 8.00 COM-8009

Use with	
Front connector	Cable
S7-300S-DA40P (4wire) Page : 99	DAHHC40-10K24B Page : 106
S7-300S-DA40P-3W (3wire) Page : 100	

ST800-AI0832SC 8.00 Pitch

