

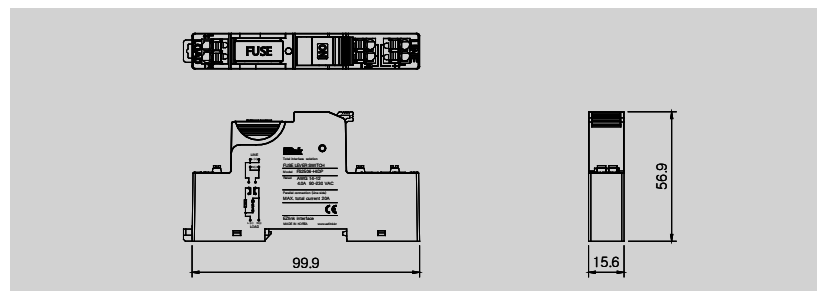
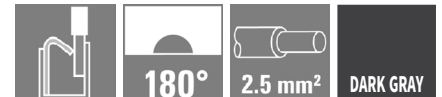
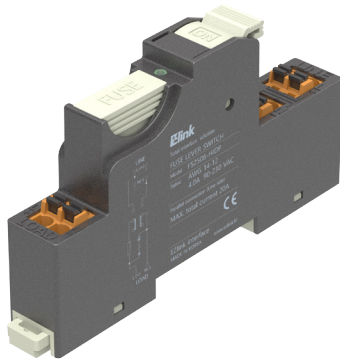
Fuse lever switch for power

90 ~ 230 VAC 4.0A / 90 ~ 125 VDC 1.0A

FS2506-HIDP

2506 Series

- Rail-mount type
- Push-in connection
- Power indicator lamp
- Line-side parallel connection possible (Optional)



Technical data

Connection data	
Connection to Line	5.00 Push-in 2P x 2
Connection to Load	5.00 Push-in 2P
Connection size (Field)	-

Input-output data	
Operating voltage	90 ~ 230 VAC / 90 ~ 125 VDC
Max. current for channel	230 VAC 4.0A / 125 VDC 1.0A
Max. parallel connection	20A (Line side)
Power indicator lamp	LED green (ON)
Fuse size (mm)	5 x 20

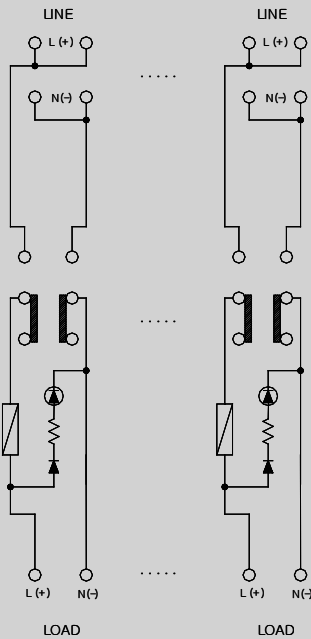
General data	
Ambient temperature	-5°C ~ 40°C
Storage temperature	-25°C ~ 55°C
Insulation test voltage	0.5KV DC
Approvals	CE

Dimensions	
Length x width x height (mm)	99.9 x 15.6 x 55.8
Mounting rail	TS35 (Weidmuller)

Ordering data	
Order No.	-

Accessories / Spare part	
Fuse (5 x 20)	
Cross-connector	

Use with	



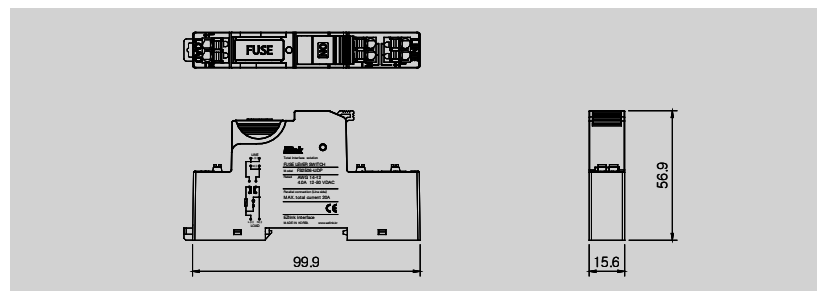
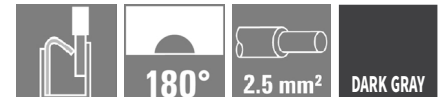
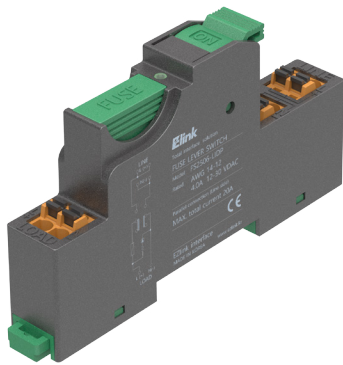
Fuse lever switch for power

12 ~ 30 VADC 4.0A

FS2506-LIDP

2506 Series

- Rail-mount type
- Push-in connection
- Power indicator lamp
- Line-side parallel connection possible (Optional)



Technical data

Connection data	
Connection to Line	5.00 Push-in 2P x 2
Connection to Load	5.00 Push-in 2P
Connection size (Field)	-

Input-output data	
Operating voltage	12 ~ 30 VADC
Max. current for channel	4.0A
Max. parallel connection	20A (Line side)
Power indicator lamp	LED green (ON)
Fuse size (mm)	5 x 20

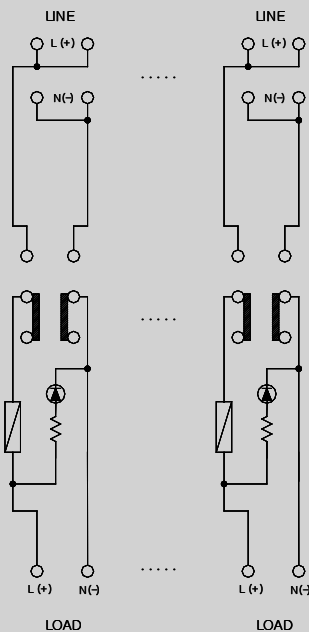
General data	
Ambient temperature	-5°C ~ 40°C
Storage temperature	-25°C ~ 55°C
Insulation test voltage	0.5KV DC
Approvals	CE

Dimensions	
Length x width x height (mm)	99.9 x 15.6 x 55.8
Mounting rail	TS35 (Weidmuller)

Ordering data	
Order No.	-

Accessories / Spare part	
Fuse (5 x 20)	-
Cross-connector	-

Use with	

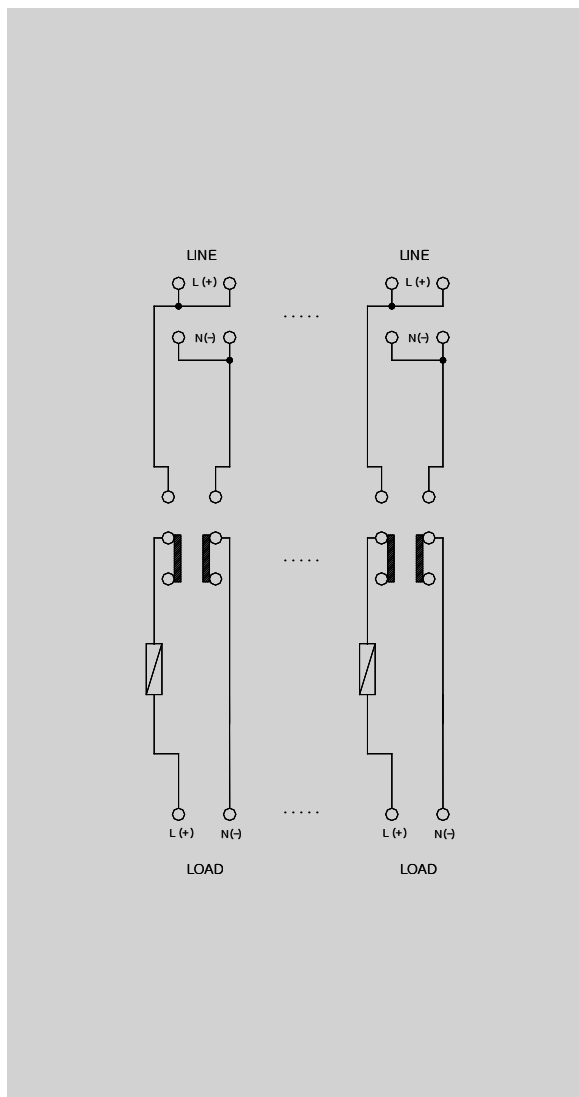
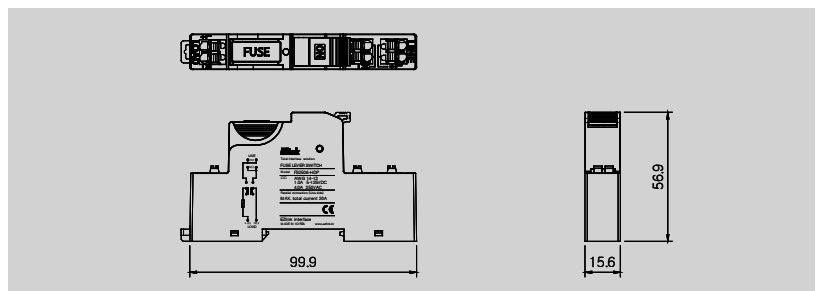
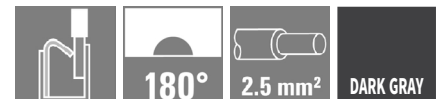
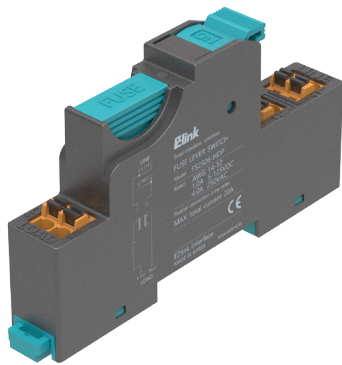


Fuse lever switch for power
250 VAC 4.0A / 5 ~ 125 VDC 1.0A

FS2506-HDP

2506 series

- Rail-mount type
- Push-in connection
- Line-side parallel connection possible (Optional)



Technical data

Connection data	
Connection to Line	5.00 Push-in 2P x 2
Connection to Load	5.00 Push-in 2P
Connection size (Field)	-

Input-output data	
Operating voltage	250 VAC / 5 ~ 125 VDC
Max. current for channel	250 VAC 4.0A / 5 ~ 125 VDC 1.0A
Max. parallel connection	20A (Line side)
Power indicator lamp	-
Fuse size (mm)	5 x 20

General data	
Ambient temperature	-5°C ~ 40°C
Storage temperature	-25°C ~ 55°C
Insulation test voltage	0.5KV DC
Approvals	CE

Dimensions	
Length x width x height (mm)	99.9 x 15.6 x 55.8
Mounting rail	TS35 (Weidmuller)

Ordering data	
Order No.	-

Accessories / Spare part	
Fuse (5 x 20)	
Cross-connector	

Use with	
----------	--