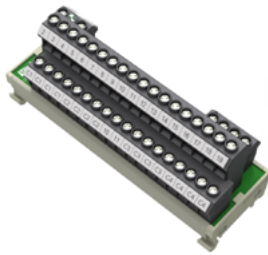
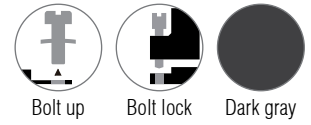


## Analog input 18 point

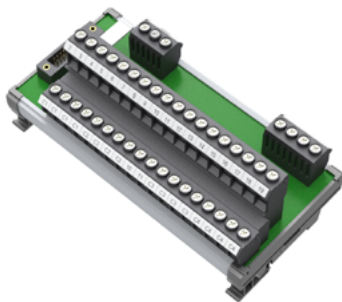
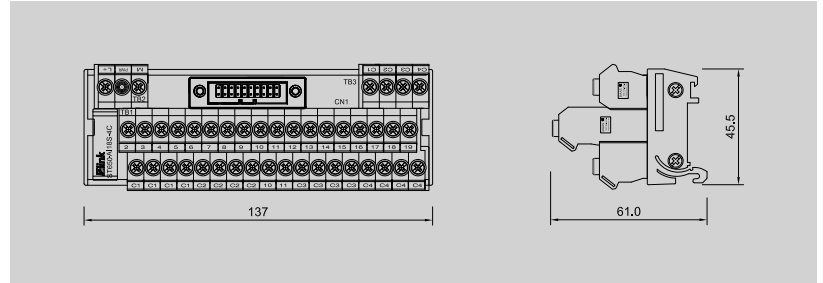
For 4 and 8 analog signals

6ES7331-7HF00-0AB0 / 6ES7331-7HF01-0AB0  
6ES7331-7KF02-0AB0

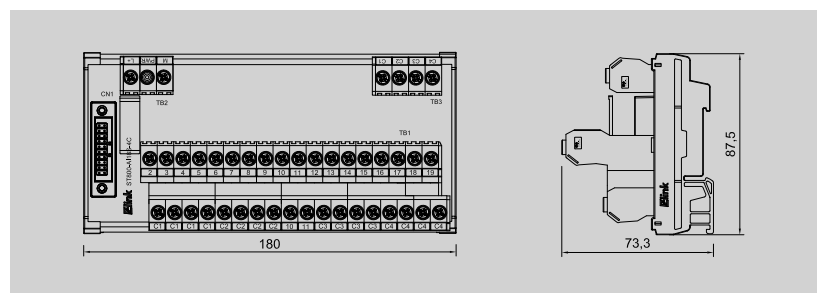
### ST650 / ST800 20P series



ST650-AI18S-4C 6.50 Pitch



ST800-AI18S-4C 8.00 Pitch



#### Technical data

Connection data	
Connection to PLC	HE 10 connectors 20-pin
Connection type (field)	Screw bolt up
Connection size (field)	0.34 ~ 2.5mm <sup>2</sup> (AWG22 ~ 14)

Input-output data	
Operating voltage	24VDC ± 10%
Max. current for channel	1.5A
Number of signs	18
PLC card supply voltage / LED voltage status	24VDC ± 10% / LED green
LED fuse indication per channel	-
PLC card supply current	2A
Fuse per channel	-

General data	
Ambient temperature	-25°C ~ 50°C
Storage temperature	-40°C ~ 60°C
Rated voltage	≤ 50V AC
Insulation test voltage	0.5KV DC
Weight 6.50 / 8.00	Approx. 191.1g / 336.9g

Dimensions	
Length x width x height (mm)	6.50 Pitch 137 x 45.5 x 61 8.00 Pitch 180 x 87.5 x 73.3

Mounting rail	TS35 (Weidmuller)
---------------	-------------------

Ordering data	
Order No.	
622317005 (6.50 Pitch)	822320006 (8.00 Pitch)

Accessories / Spare part	
Terminal markers	6.50 8.00 DEK 5/8
Cross-connector	6.50 COM-6509 8.00 COM-8009

Use with	
Front connector	Cable
S7-300S-DA20P	DAHHC20-10K24B Page : 104 DAHHC20-10K25B Page : 104

